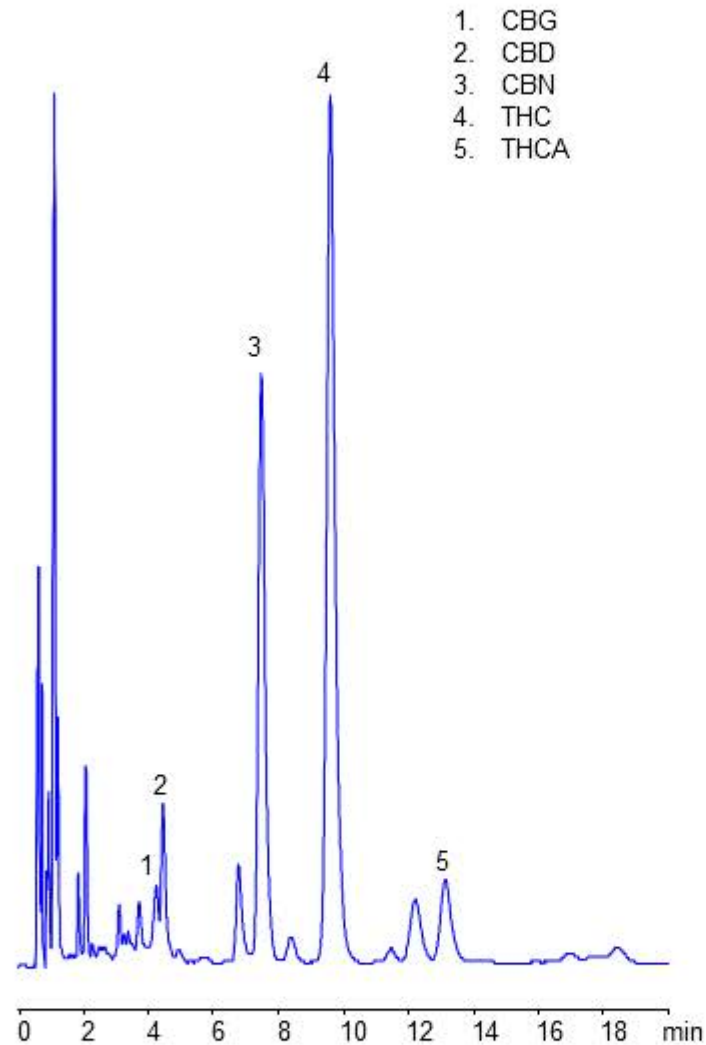


HPLC Analysis of Cannabis Infused Syrup



Conditions of Experiment

Column:	Daze 47
Separation Modes:	
Column Dimenstions:	3.0 x 150 mm, 5 um, 100A
Mobile Phase:	70% ACN with 0.1% H2SO4
Detection:	UV 275 nm
Sample:	
Injection:	
Flow rate:	1.0 mL/min

Analytes

Class of compounds:	Aromatic acid, Aromatic compound, Cannabinoid, Controlled substance, Drug
Nature of compounds:	Acidic, Hydrophobic, Neutral
Compounds:	CBG, CBD, CBN, THC, THCA