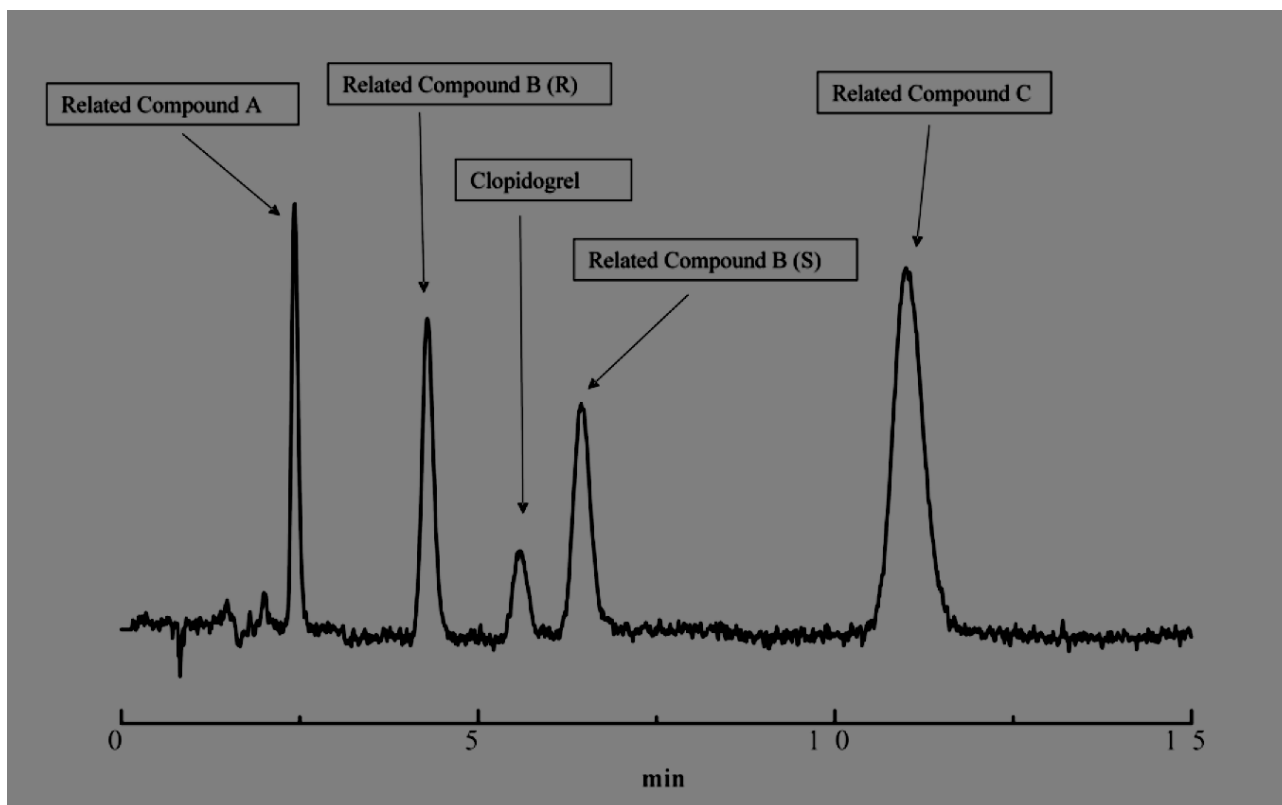


Separation of Clopidogrel Bisulfate and Related Substances



Column	ULTRON ES-OVM, 150 x 4.6mm x 5 μ m (P/N: UESOVMC15.46.5)
Sample	Clopidogrel Bisulfate, 0.5 μ g/mL Related Compound A, 1.0 μ g/mL Related Compound B, 3.0 μ g/mL Related Compound C, 5.0 μ g/mL
Mobile phase	10 mM KH ₂ PO ₄ / Acetonitrile 75/25
Flow rate	1.0 mL/min
Injection volume	10 μ L
Temperature	25°C
Detection	220nm