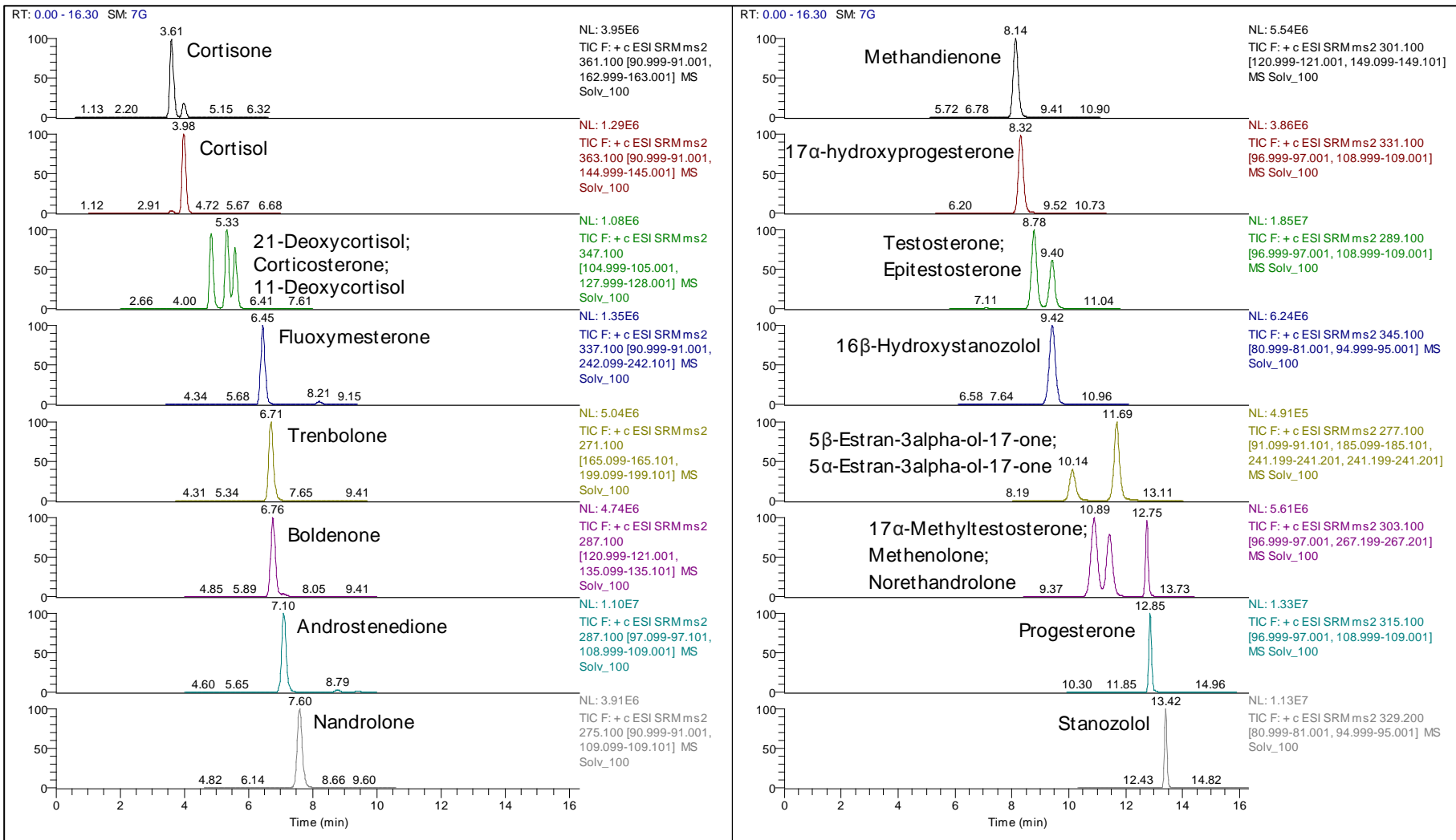




22 STEROIDS ON SELECTRA AQUEOUS C18 BY LC-MS/MS



HPLC: Thermo Scientific Dionex™UltiMate™3000®LC System		
Column: UCT, Selectra®, Aqueous C18, 100 x 2.1 mm, 3 µm		
Guard column: UCT, Selectra®, Aqueous C18, 10 x 2.0 mm, 3 µm		
Column temperature: 40 °C		
Column flow rate: 0.300 mL/min		
Auto-sampler temperature: 10 °C		
Injection volume: 10 µL		
Gradient program:		
Time (min)	A% (0.1% formic acid in H ₂ O)	B% (0.1% formic acid in MeOH)
0	50	50
2	40	60
9	40	60
12	0	100
15	0	100
15.1	50	50
19	50	50

MS parameters	
Instrumentation	Thermo Scientific TSQ Vantage tandem MS
Polarity	ESI +
Spray voltage	3000 V
Vaporizer temperature	409 °C
Ion transfer capillary temperature	249 °C
Sheath gas pressure	20 arbitrary units
Auxiliary gas pressure	40 arbitrary units
Q1 and Q3 peak width (FWHM)	0.4 and 0.7 Da
Collision gas and pressure	Ar at 1.5 mTorr
Cycle time	1 sec

Compound	RT (min)	Precursor ion	Product ion 1	Product ion 2
Cortisone	3.61	361.1	163.0	91.0
Cortisol	4.00	363.1	91.0	145.0
21-Deoxycortisol	4.85	347.1	175.0	311.2
Corticosterone	5.34	347.1	105.0	128.0
11-Deoxycortisol	5.59	347.1	109.0	97.0
Fluoxymesterone	6.45	337.1	91.0	242.1
Trenbolone	6.71	271.1	165.1	199.1
Boldenone	6.78	287.1	121.0	135.1
Androstenedione	7.12	287.1	97.1	109.0
Nandrolone	7.60	275.1	109.1	91.0
Methandienone	8.15	301.1	121.0	149.1
17alpha-hydroxyprogesterone-D8	8.21	339.2	100.1	113.1
17alpha-hydroxyprogesterone	8.32	331.1	109.0	97.0
Testosterone-D3	8.73	292.1	97.0	109.0
Testosterone	8.78	289.1	97.1	109.0
16beta-Hydroxystanozolol	9.40	345.1	81.0	95.0
Epitestosterone	9.42	289.1	109.0	97.0
5beta-Estran-3alpha-ol-17-one	10.16	277.1	241.2	91.1
17alpha-Methyltestosterone	10.90	303.1	267.2	97.0
Methenolone	11.44	303.1	83.0	187.1
5alpha-Estran-3alpha-ol-17-one	11.68	277.1	241.2	185.1
Norethandrolone	12.73	303.1	109.0	77.0
Progesterone-D9	12.77	324.2	100.1	113.0
Progesterone	12.86	315.1	97.0	109.0
Stanozolol-D3	13.33	332.2	81.0	95.0
Stanozolol	13.35	329.2	81.0	95.0