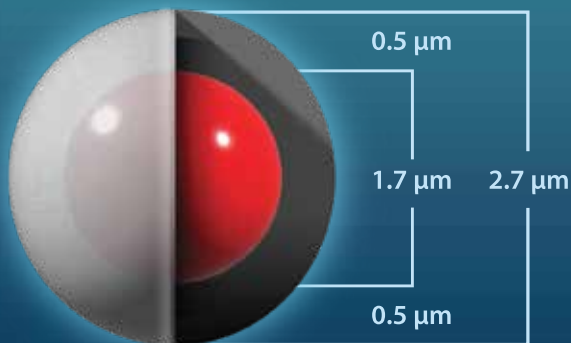




# SELECTRACORE®

Core-Shell Columns

C18 | DA | PFPP



**2.7  $\mu\text{m}$**   
Particle size

Solid core coated with a porous layer of high-purity silica

1(800) 385-3153

[unitedchem.com](http://unitedchem.com)





**LOW**  
**BACK PRESSURE**

**OUTSTANDING**  
**PEAK RESOLUTION**

**EXCEPTIONAL**  
**EFFICIENCY**



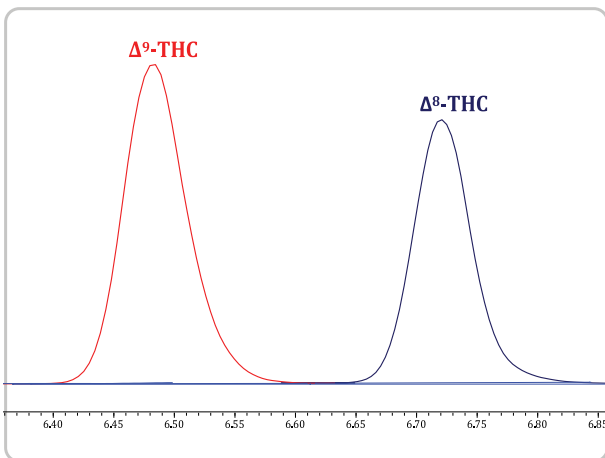
# C18 SelectraCore®

## Core-Shell Columns

pH Range	2 to 9
Max. Temp	60°C
Max. Pressure	600 bar (9000 psi)

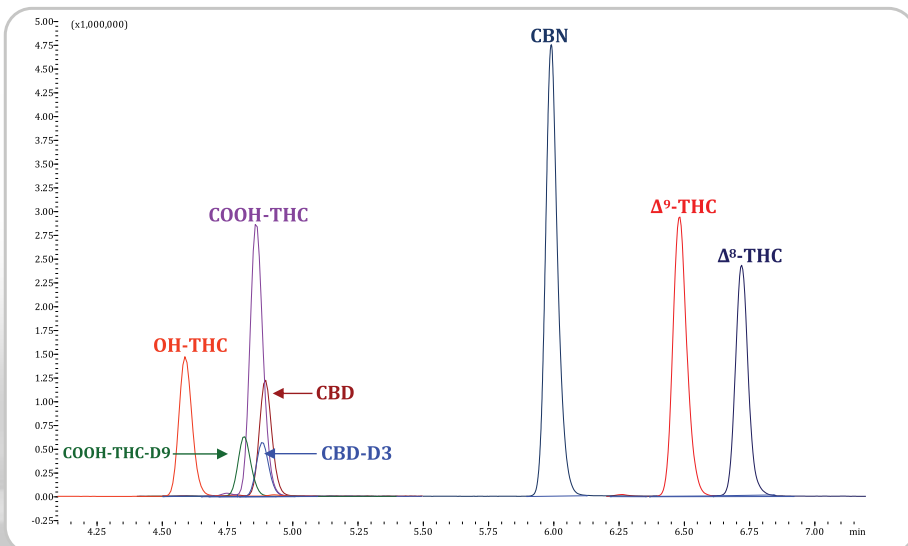
- Popular choice for method development
- Excellent reversed-phase retention capacity
- Applicable to a wide range of analyte polarities
- **Target** – Suitable for most acidic, basic & neutral compounds
- **Applications** – Food, enviro, forensic & pharmaceutical analysis

### Baseline separation of THC isomers

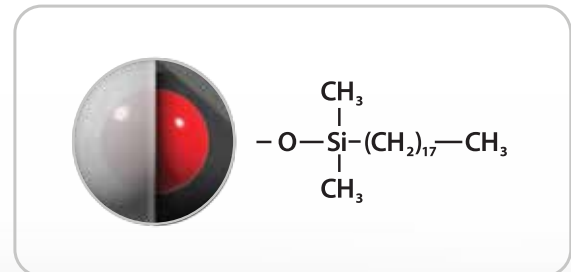


HPLC system	Shimadzu Nexera X2
Mass spec	Shimadzu LCMS-8050
UHPLC Column	SelectraCore® C18 Column 100 x 2.1 mm, 2.7 µm
Guard Column	SelectraCore® C18 Guard 5 x 2.1 mm, 2.7 µm
Column Temp	40°C
Flow Rate	0.4 mL/min
Injection Volume	10 µL
Mobile phase	A: 0.1 % formic acid in water B: 0.1 % formic acid in methanol
Gradient	B conc: 50% (0 min) - 80% (3 min) - 90% (7.5 min) - 100% (8 to 9 min) - 50% (9.1 to 12 min)

### Chromatogram of extracted 50 ng/mL urine sample, minutes 4.10 – 7.20



### C18 Stationary Phase



**SelectraCore®**  
Core-Shell Columns / C18

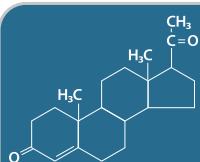


# DA SelectraCore®

Core-Shell Columns

pH Range	1.5 to 9
Max. Temp	60°C
Max. Pressure	600 bar (9000 psi)

- Unique polyaromatic stationary phase with alternate C18 selectivity
- Reversed-phase retention based on pi-pi interaction
- Allows analysis of compounds that are difficult to resolve on C18
- **Target** – Aromatic, conjugated or unsaturated analytes
- **Applications** – Drugs of abuse, pain management drugs, pesticides & mycotoxins

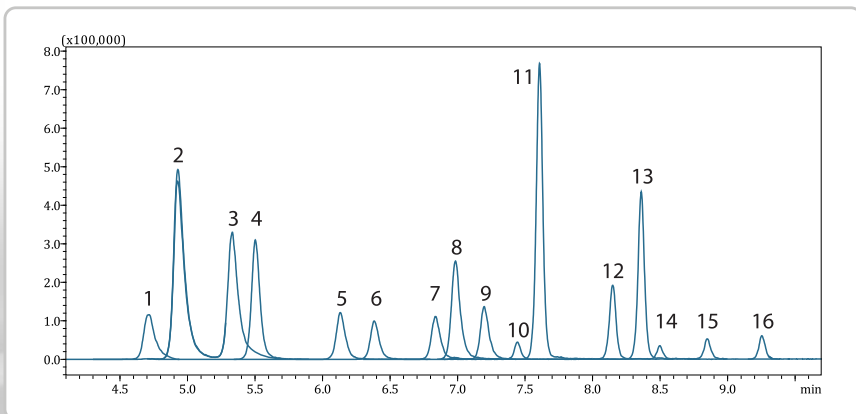


## Steroid Hormones

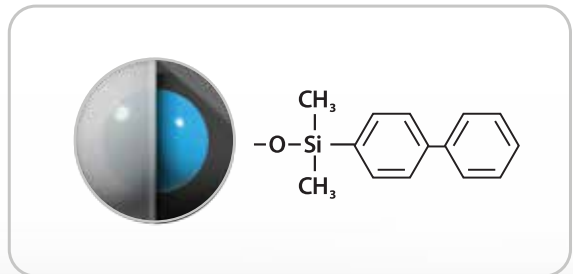
- 1) 17b-estradiol-17-sulphate
- 2) 17b-estradiol-3-sulphate
- 3) 17a-estradiol Sulphate
- 4) Boldenone Sulphate
- 5) Nandrolone Sulphate
- 6) Testosterone Sulphate
- 7) Estrone-3-sulphate
- 8) DHEA Sulphate
- 9) Androsterone Sulphate
- 10) Estradiol
- 11) Boldenone
- 12) Nandrolone
- 13) Testosterone
- 14) DHEA
- 15) Estrone
- 16) Androsterone

HPLC system	Shimadzu Nexera X2
Mass spec	Shimadzu LCMS-8050
UHPLC Column	SelectraCore® DA Column 100 x 2.1 mm, 2.7 µm
Guard Column	SelectraCore® DA Guard 5 x 2.1 mm, 2.7 µm
Column Temp	40°C
Flow Rate	0.4 mL/min
Injection Volume	2.0 µL
Mobile phase	A: 0.1% formic acid in water B: Acetonitrile
Gradient	B conc: 20% (0 min), 30% (5 min), 45% (8.5 min) 100% (10.5 to 11.5 min), 20% (11.6 to 15.6 min)

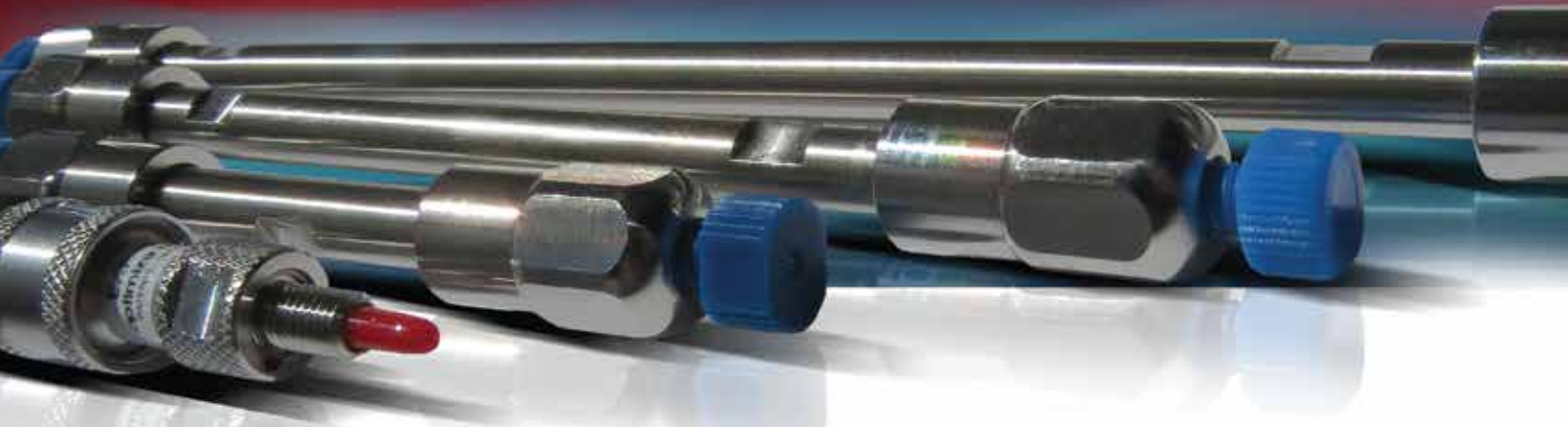
Standard mix at 25 ng/mL in 80/20 water/acetonitrile



### DA Stationary Phase



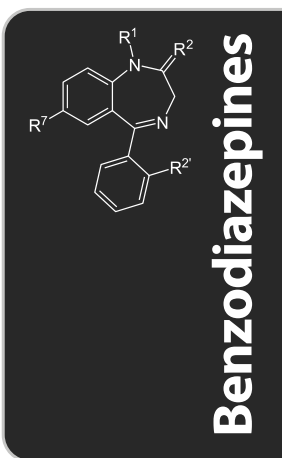
**SelectraCore®**  
Core-Shell Columns / DA



# PFPP SelectraCore® Core-Shell Columns

- Fluorinated stationary phase with electron-deficient phenyl rings
- Multiple retention mechanisms include dipole-dipole, pi-pi & ion exchange interactions
- Can also be used for Normal phase and HILIC separations
- Alternate selectivity to C8 & C18
- **Target** – Suitable for acidic, basic & neutral compounds
- **Applications** – Panels consisting of Beta-blockers, Benzodiazepines, TCAs & Catecholamines

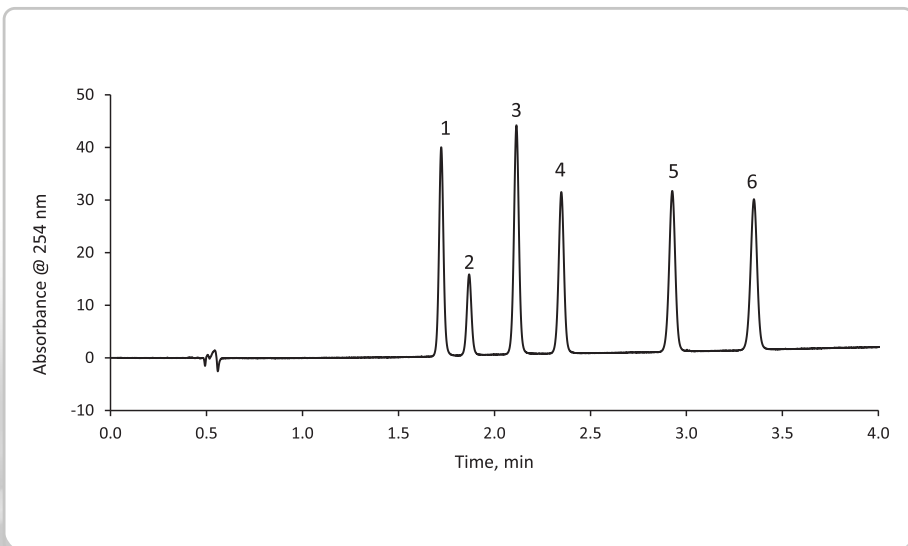
pH Range	2 to 8
Max. Temp	60°C
Max. Pressure	600 bar (9000 psi)



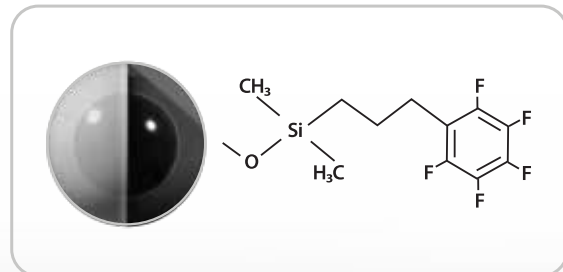
- 1) Oxazepam
- 2) Lorazepam
- 3) Nitrazepam
- 4) Clonazepam
- 5) Flunitrazepam
- 6) Diazepam

HPLC System	Shimadzu Nexera X2
UV Detection	254 nm
UHPLC Column	SelectraCore® PFPP Column 100 x 2.1 mm, 2.7 µm
Guard Column	SelectraCore® PFPP Guard 5 x 2.1 mm, 2.7 µm
Column Temp	35°C
Flow Rate	0.4 mL/min
Injection Volume	0.5 µL
Mobile phase	A: 25 mM Ammonium acetate, pH 5.46 B: Acetonitrile
Gradient	30-42% B in 4 minutes

Standard mix at 0.05 mg/mL in 70/30 water/acetonitrile



PFPP Stationary Phase



**SelectraCore®**  
Core-Shell Columns / PFPP



### SelectraCore® C18 Core-Shell Columns

Length	i.d.	Particle Size	Pore Size	Part Number
50 mm	2.1 mm	2.7 µm	90 Å	SCS27-C18521
100 mm	2.1 mm	2.7 µm	90 Å	SCS27-C181021
150 mm	2.1 mm	2.7 µm	90 Å	SCS27-C181521
50 mm	4.6 mm	2.7 µm	90 Å	SCS27-C18546
100 mm	4.6 mm	2.7 µm	90 Å	SCS27-C181046
150 mm	4.6 mm	2.7 µm	90 Å	SCS27-C181546

### SelectraCore® DA Core-Shell Columns

Length	i.d.	Particle Size	Pore Size	Part Number
50 mm	2.1 mm	2.7 µm	90 Å	SCS27-DA521
100 mm	2.1 mm	2.7 µm	90 Å	SCS27-DA1021
150 mm	2.1 mm	2.7 µm	90 Å	SCS27-DA1521
50 mm	4.6 mm	2.7 µm	90 Å	SCS27-DA546
100 mm	4.6 mm	2.7 µm	90 Å	SCS27-DA1046
150 mm	4.6 mm	2.7 µm	90 Å	SCS27-DA1546

### SelectraCore® C18 Guard Columns (3/pk)

Length	i.d.	Particle Size	Pore Size	Part Number
5 mm	2.1 mm	2.7 µm	90 Å	SCS27-C18GDC21
5 mm	4.6 mm	2.7 µm	90 Å	SCS27-C18GDC46

### SelectraCore® DA Guard Columns (3/pk)

Length	i.d.	Particle Size	Pore Size	Part Number
5 mm	2.1 mm	2.7 µm	90 Å	SCS27-DAGDC21
5 mm	4.6 mm	2.7 µm	90 Å	SCS27-DAGDC46

### SelectraCore® PFPP Core-Shell Columns

Length	i.d.	Particle Size	Pore Size	Part Number
50 mm	2.1 mm	2.7 µm	90 Å	SCS27-PFP521
100 mm	2.1 mm	2.7 µm	90 Å	SCS27-PFP1021
150 mm	2.1 mm	2.7 µm	90 Å	SCS27-PFP1521
50 mm	4.6 mm	2.7 µm	90 Å	SCS27-PFP546
100 mm	4.6 mm	2.7 µm	90 Å	SCS27-PFP1046
150 mm	4.6 mm	2.7 µm	90 Å	SCS27-PFP1546

<b>Selectra®</b> Direct Connect Guard Holder	SLGRDHLDR-HPOPT
--	-----------------



### SelectraCore® PFPP Guard Columns (3/pk)

Length	i.d.	Particle Size	Pore Size	Part Number
5 mm	2.1 mm	2.7 µm	90 Å	SCS27-PFPGDC21
5 mm	4.6 mm	2.7 µm	90 Å	SCS27-PFPGDC46



#### Sales Inquiries

info@unitedchem.com / 1(800)385-3153



#### Technical Support

methods@unitedchem.com



#### Product Documentation

unitedchem.com/technical-docs



### **PRICES AND TERMS**

Our prices are subject to change without notice. The price in effect when we receive your order will apply. All prices are in US Dollars and are F.O.B. Lewistown, PA 17044. Terms of payment are net 30 days.

### **MINIMUM ORDERS**

We welcome all orders, therefore, we do not have a minimum order requirement. When ordering, please include your purchase order number, complete "Ship To" and "Bill To" address, catalog number, quantity, and description of product(s). Also include your name and a phone number where you can be reached should we have any questions concerning your order.

### **SHIPMENTS**

Normal processing is within 24 hours after receipt of an order. Unless special shipping requests have been made, our trained staff will send all orders by UPS Ground service. The appropriate shipping charges (freight & insurance costs) will be added to the invoice, unless otherwise instructed by the customer.

### **SPECIAL PRICING**

We offer special pricing for volume purchases and standing orders. These discounts apply to bonded phase extraction column purchases only. Please call a sales representative for more information on special pricing qualifications.

### **RETURN POLICY**

Our Quality Manager will handle all returns. Before returning merchandise, please call to obtain a return authorization number from the quality manager. We will need to know the reason for the return, date of purchase, purchase order number and invoice number in order to issue a return authorization number. Return merchandise must be received before a credit can be issued. Returns will not be accepted after 90 days. A restocking fee of 25% of the price paid, or a minimum of \$25.00 (whichever is greater) will be charged on all returns.

### **WARRANTY**

All products manufactured by UCT are guaranteed against defects in materials and workmanship for a period of 90 days after shipment. UCT will replace any items that prove to be defective during this time period. The exclusive remedy requires the end user to first advise UCT of the defective product by phone or in writing and must include order number, the lot number and the shipping date.

To initiate this action, photographs of the product, including packaging and labeling of the containers, must be submitted to the UCT Representative for approval. With approval a return authorization can be initiated, and must be received within 30 days. Once the materials arrive at UCT a further inspection of the materials must be completed and accepted by our Quality Manager prior to further action of credits or replacement. UCT's total liability is limited to the replacement cost of UCT products.

This warranty does not apply to damage resulting from misuse.



# SELECTRACORE®

Core-Shell Columns

C18 | DA | PFPP



UCT, Inc.  
2731 Bartram Road  
Bristol, PA 19007  
Phone: 1(800)385-3153  
Email: info@unitedchem.com



MADE IN  
USA

[unitedchem.com](http://unitedchem.com)



© 2022 United Chemical Technologies, Inc. All Rights Reserved.