



# BENZODIAZEPINES ON SELECTRA DA BY LC-MS/MS

## LC-MS/MS Conditions:

**HPLC:** Agilent 1200 Binary Pump SL

**Detector:** AB Sciex API 4000 QTrap MS/MS

**Column:** UCT Selectra®DA HPLC column, 100 x 2.1 mm, 3 µm  
(p/n SLDA100ID-3UM)

**Guard Column:** UCT Selectra®DA guard column, 10 x 2.0 mm, 3 µm  
(p/n SLDAGDC20-3UM)

**Column Temperature:** 50 °C

**Column Flow Rate:** 0.3 mL/min

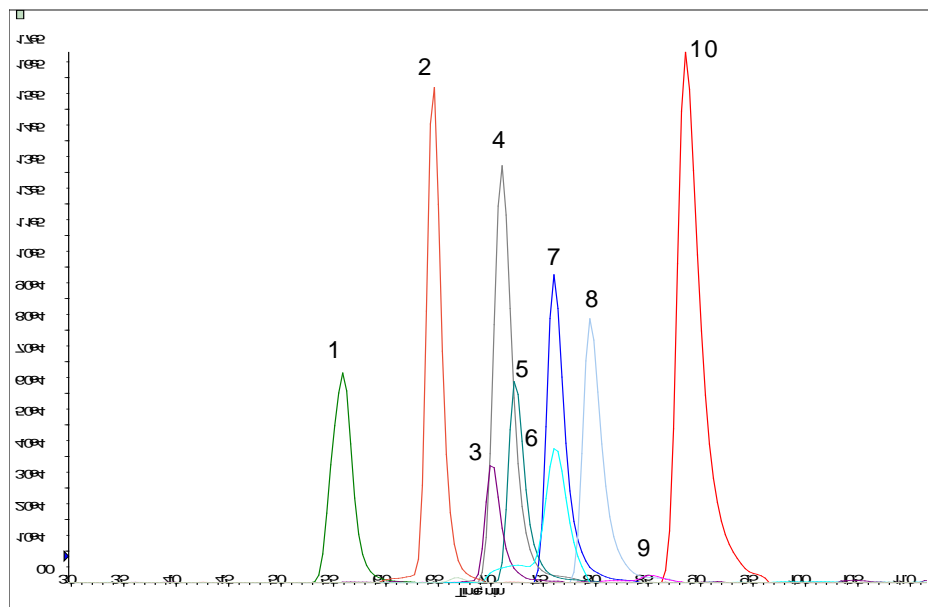
**Injection Volume:** 10 µL

**Mobile Phase A:** 0.1% formic acid in H<sub>2</sub>O

**Mobile Phase B:** 0.1% formic acid in MeOH

## Gradient Program:

Time (min)	% A
0	70
0.5	70
2	25
6.5	25
7	0
9	0
10.1	70
14	70



## MRM transitions (ESI positive, dwell time: 50 ms)

Compound	Rt (min)	Q1 ion	Q3 ion 1	Q3 ion 2
7-aminoclonazepam	7.58	286.1	222.3	250.2
Alpha-Hydroxy-Alprazolam	9.26	325.2	297.1	216.3
Alprazolam	9.72	309.2	205.3	281.2
Clonazepam	9.03	316.1	270.2	241.2
Diazepam	9.87	285.1	193.2	154.1
Lorazepam	8.94	321.1	303.3	275.0
Midazolam	8.53	326.0	291.0	222.0
Nordiazepam	9.30	271.1	140.1	165.2
Oxazepam	9.00	287.1	241.3	104.2
Temazepam	9.45	301.1	255.2	177.2
Alprazolam D5	9.69	314.2	286.3	
Oxazepam D5	8.98	292.1	246.2	