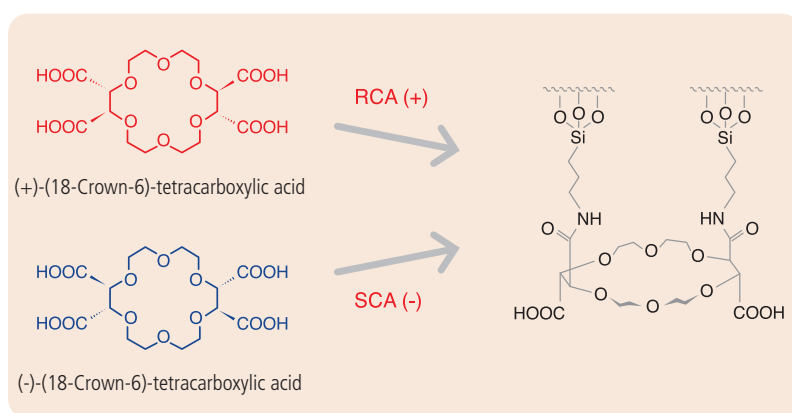




ChiroSil® columns are very effective for enantiomer separation of various natural and unnatural α -amino acids, α -amino acids, primary amines, amino alcohols (β -blockers) and secondary amines. Other racemic compounds, such as amino alcohols (β -blockers), secondary amines, drugs containing primary amines and secondary amines are also expected to be resolved on ChiroSil® columns.

The structure of ChiroSil® Stationary phase



High selectivity:

- α -Amino Acids
- α -Amino Amides and Esters
- Amines
- Amino Alcohols
- β -Blockers
- β -Amino Acids
- Aryl α -Amino Ketones
- Tocainide's Analogues
- Gemifloxacin
- N-(3, 5-dinitrobenzoyl)- α -Amino Acids
- N-(3-dinitrobenzoyl)- α -Amino Acids
- N-benzyl- α -Amino Acids

Product List

Phase	Particle size	Pore size	Length \times ID	Part No.
ChiroSil RCA(+)	5 μ m	100 Å	100 x 2.1 mm	CH RCA(+)-51001021
			150 x 2.1 mm	CH RCA(+)-51001521
			150 x 4.6 mm	CH RCA(+)-51001546
			250 x 4.6 mm	CH RCA(+)-51002546
			250 x 10.0 mm	CH RCA(+)-51002510
			250 x 21.2 mm	CH RCA(+)-51002520
ChiroSil SCA(-)	5 μ m	100 Å	100 x 2.1 mm	CH SCA(-)-51001021
			150 x 2.1 mm	CH SCA(-)-51001521
			150 x 4.6 mm	CH SCA(-)-51001546
			250 x 4.6 mm	CH SCA(-)-51002546
			250 x 10.0 mm	CH SCA(-)-51002510
			250 x 21.2 mm	CH SCA(-)-51002520