

## Analysis of Melamine and Cyanuric Acid

**Keywords:**

HILIC, melamine, cyanuric acid, food, pharma, NQAD, iHILIC-Fusion(+)

**Test Conditions:**

Column: **iHILIC®-Fusion(+)**  
150 x 2.1 mm, 3.5 µm, 100 Å, #60170

Part No.: **100.152.0310**

Mobile phase: 80/20 (v/v), Acetonitrile/10 mM Ammonium Formate, pH 4.0

Flow rate: 0.3 mL/min

Back pressure: 108 bar

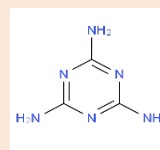
Temperature: 35 °C

Injection volume: 10 µL

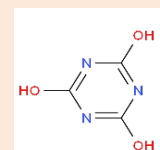
Sample: Melamine (50 µg/mL); Cyanuric acid (50 µg/mL)

Sample diluent: 80/20 (v/v), Acetonitrile/H<sub>2</sub>O

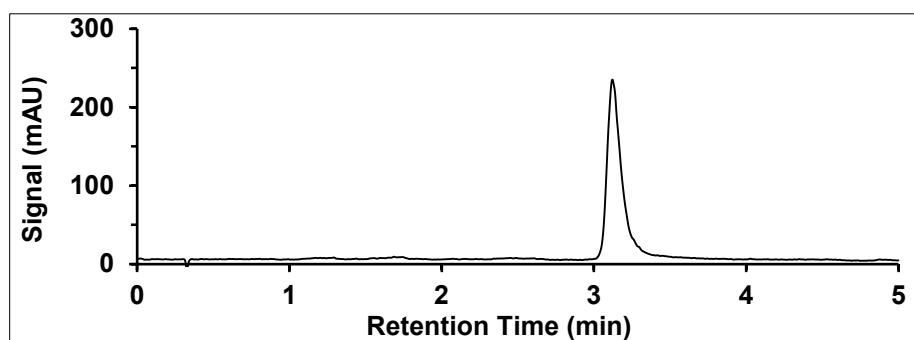
Detection: NQAD Detector at 35 °C and 1.3 S filter setting

**Compounds:**

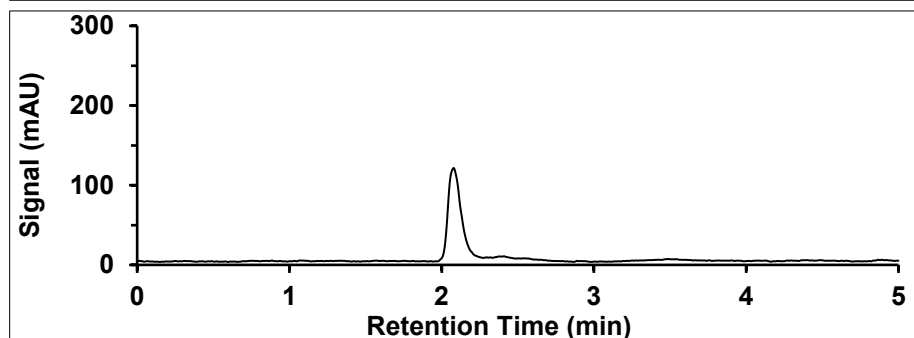
Melamine



Cyanuric acid

**Peak:**

1. Melamine



2. Cyanuric acid