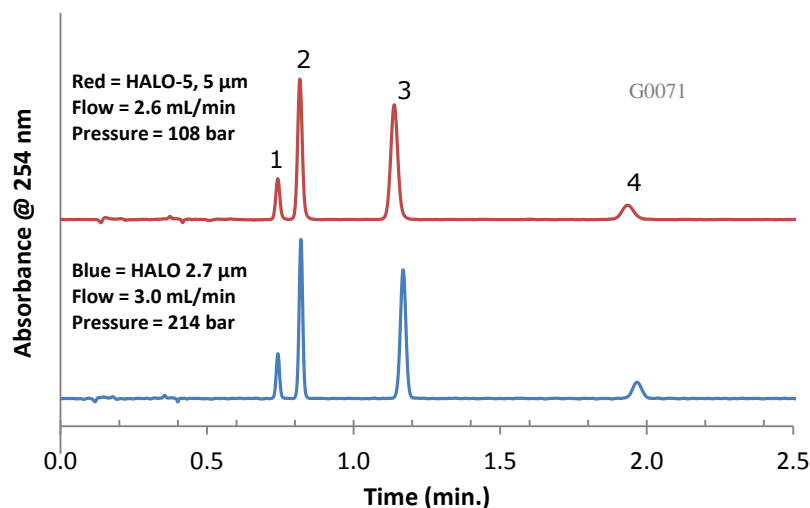


Comparable Selectivity between HALO-5 and HALO 2.7 µm HILIC Phases



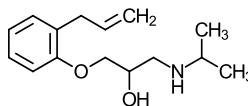
PEAK IDENTITIES:

1. Alprenolol
2. Pindolol
3. Acebutolol
4. Atenolol

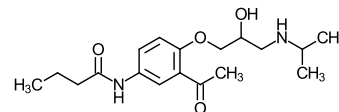
TEST CONDITIONS:

Column 1: 4.6 x 100 mm, HALO 5 µm HILIC
Part Number: 95814-601
Column 2: 4.6 x 100 mm, HALO 2.7 µm HILIC
Part Number: 92814-601
Mobile Phase: 11/89: A/B
A = 0.1 M Ammonium formate, pH=3 (adj.)
B = Acetonitrile
Flow Rate: See chart
Pressure: See chart
Temperature: 30°C
Detection: UV 254 nm, VWD
Injection Volume: 2.0 µL
Sample Solvent: mobile phase
Response Time: 0.02 sec.
Flow Cell: 2.5 µL semi-micro
LC System: Shimadzu Prominence UFLC XR
ECV: ~14 µL

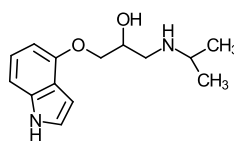
STRUCTURES:



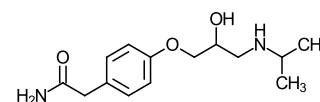
Alprenolol



Acebutolol



Pindolol



Atenolol

Because of similar selectivities, easy method transfer is accomplished between the 5 µm and 2.7 µm HALO HILIC phases with small changes in flow rate.