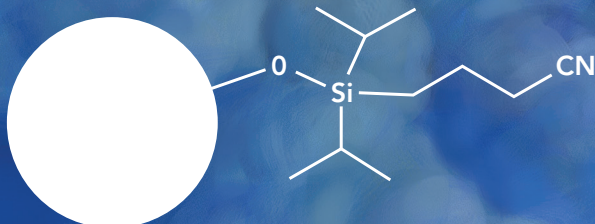


Introducing the new HALO[®] ES-CN

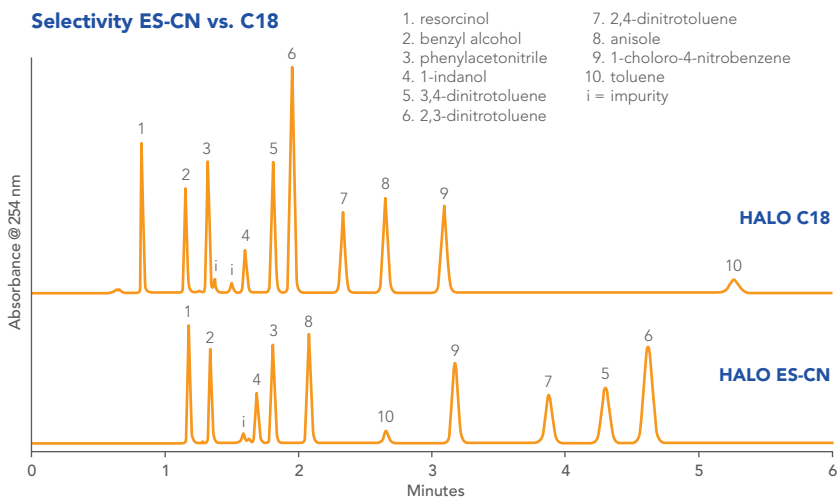


- Moderately polar phase for alternate selectivity
- Increased retention of polar compounds
 - Decreased retention of hydrophobic compounds

Steric-protected silane for low pH stability

Fully end-capped for neutral pH applications

Selectivity ES-CN vs. C18



Columns: 4.6 x 100mm
 Mobile Phase: 40/60-water/MeOH for C18
 50/50-water/MeOH for ES-CN

Flow Rate: 1.25 mL/min
 Pressure: 310 Bar
 Temperature: 30 °C



103 Commons Court | P.O. Box 587 | Chadds Ford, PA 19317
 Phone: 800-441-7508 | Fax: 610-358-5993
 Website: www.mac-mod.com | Email: info@mac-mod.com