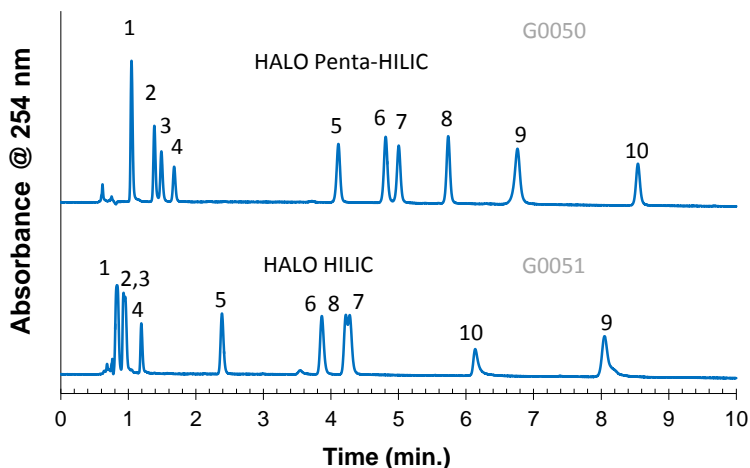


Separation of Cephalosporins on HALO Penta-HILIC and HALO HILIC



PEAK IDENTITIES:

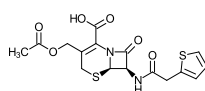
1. Cephalothin
2. Cefoxitin
3. Cefotaxime
4. Cefazolin
5. Cefaclor
6. Cephalexin
7. Cephadrine
8. Cefadroxil
9. Ceftazidime
10. Cephalosporin C

TEST CONDITIONS:

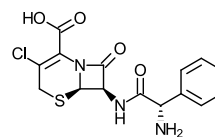
Columns: 2.1 x 150 mm
 Part Numbers: HALO Penta-HILIC: 92812-705
 HALO HILIC: 92812-701
 Mobile Phase: A= 95/5 ACN/H₂O with 5 mM NH₄formate, pH=3.0 (adj.); B= 50/50 ACN/H₂O with 5 mM NH₄formate, pH=3.0 (adj.)
 Gradient: HALO Penta-HILIC: 85-65% B in 10 min.
 HALO HILIC: 85-70% B in 10 min.
 Flow Rate: 0.5 mL/min.
 Pressure: 195 bar on HALO Penta-HILIC
 163 bar on HALO HILIC
 Temperature: 30° C
 Detection: UV 254 nm, VWD
 Injection Volume: 0.5 µL
 Sample Solvent: 50/50 ACN/water
 Flow Cell: 5 µL semi-micro
 LC System: Agilent 1100

The HALO Penta-HILIC phase offers an alternate selectivity for the separation of cephalosporins in HILIC mode.

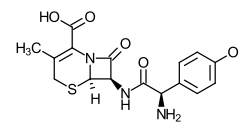
STRUCTURES:



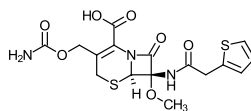
Cephalothin



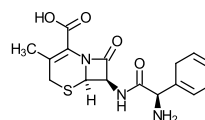
Cefaclor



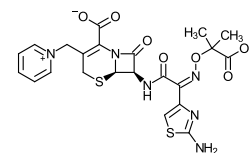
Cefadroxil



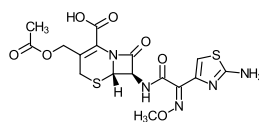
Cefoxitin



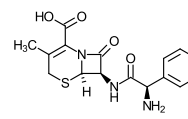
Cephalexin



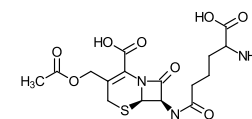
Ceftazidime



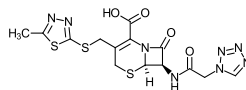
Cefotaxime



Cephadrine



Cephalosporin C



Cefazolin