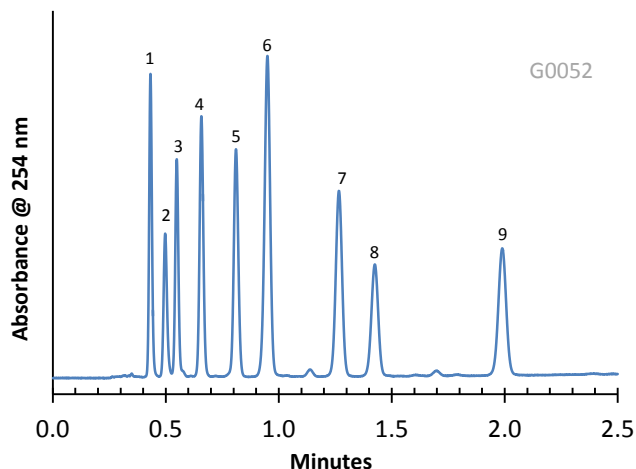


Separation of Cephalosporins on HALO ES-CN



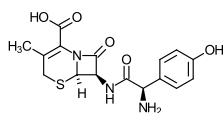
PEAK IDENTITIES:

1. Cefadroxil
2. Ceftazidime
3. Cefaclor
4. Cephalexin
5. Cephadrine
6. Cefotaxime
7. Cefoxitin
8. Cefazolin
9. Cephalothin

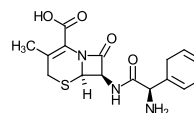
TEST CONDITIONS:

Columns: HALO ES-CN, 4.6 x 50 mm
 Part Numbers 92814-404
 Mobile Phase: A= 0.02 M Phosphate buffer, pH=2.7 (adj.)
 B= Methanol
 Gradient: 20% B to 40% B in 2.5 min.
 Flow Rate: 2.0 mL/min.
 Pressure: 225 bar at start of gradient
 Temperature: 40° C
 Detection: UV 254 nm, VWD
 Injection Volume: 1.0 µL
 Sample Solvent: 70/30 Water/Methanol
 Response Time: 0.02 sec.
 Flow Cell: 2.5 µL semi-micro
 LC System: Shimadzu Prominence UFLC XR
 ECV: about 14 µL

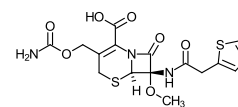
STRUCTURES:



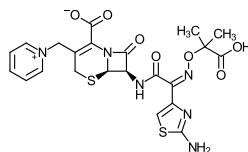
Cefadroxil



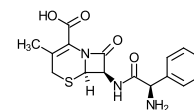
Cephalexin



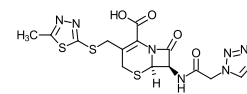
Cefoxitin



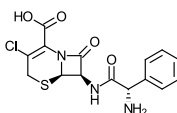
Ceftazidime



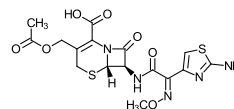
Cephadrine



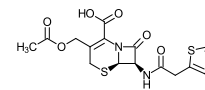
Cefazolin



Cefaclor



Cefotaxime



Cephalothin

These cephalosporins can be rapidly separated by reversed-phase HPLC on a HALO Fused-Core ES-CN bonded phase column.