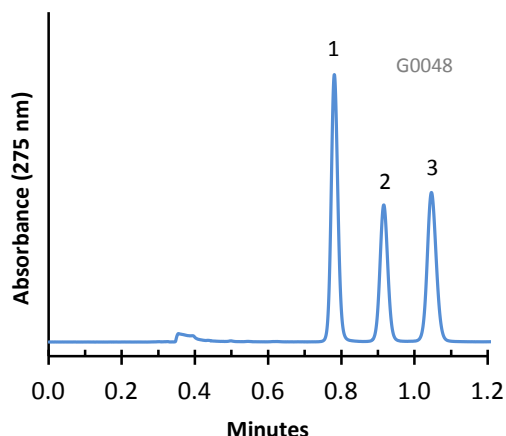


## Separation of Fluoroquinolone Drugs on HALO Phenyl-Hexyl Phase



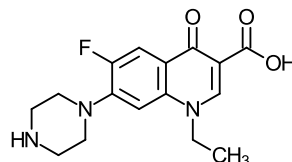
### PEAK IDENTITIES:

1. Norfloxacin
2. Ciprofloxacin
3. Lomefloxacin

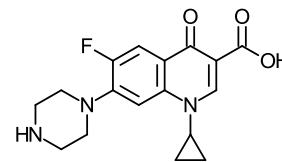
### TEST CONDITIONS:

Column: 4.6 x 50 mm, HALO Phenyl-Hexyl  
Part Number: 92814-406  
Mobile Phase: 82/18: A/B  
A= 0.025 M Sodium phosphate, pH=2.5 (adj.)  
B= Acetonitrile  
Flow Rate: 1.5 mL/min.  
Pressure: 170 Bar  
Temperature: 30°C  
Detection: UV 275 nm, VWD  
Injection Volume: 0.3 µL  
Sample Solvent=Dimethylformamide/Acetonitrile  
Response Time: 0.02 sec.  
Flow Cell: 2.5 µL semi-micro  
LC System: Shimadzu Prominence UFLC XR  
ECV: ~14 µL

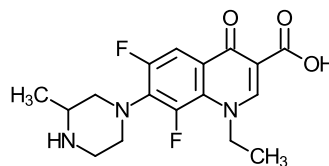
### STRUCTURES:



Norfloxacin



Ciprofloxacin



Lomefloxacin

The fluoroquinolone drugs can be quickly separated on HALO Phenyl-Hexyl stationary phase in less than 1.2 minutes.