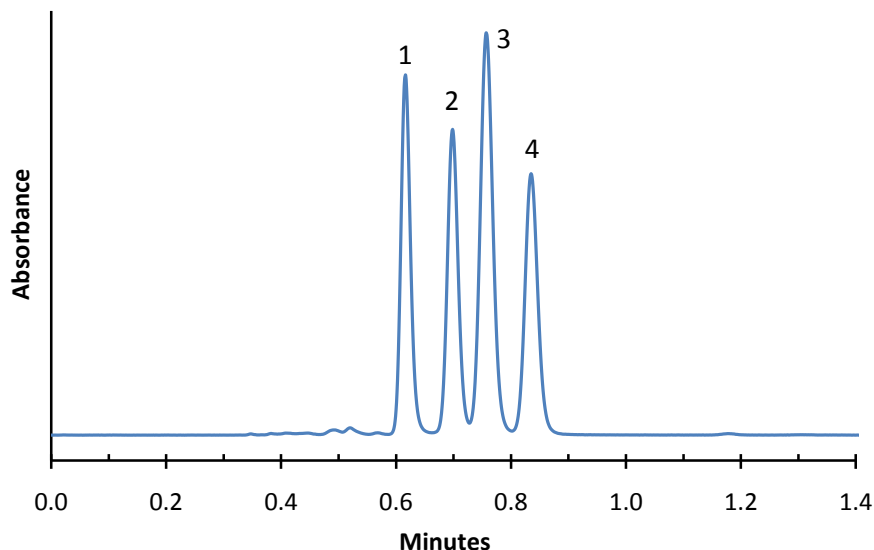


Application Note: 39-P

## Rapid Separation of Sulfonyl Urea Drugs on HALO PFP Phase



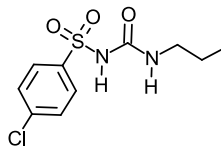
### PEAK IDENTITIES:

1. Chlorpropamide
2. Acetohexamide
3. Glipizide
4. Tolazamide

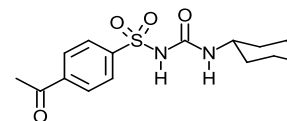
### TEST CONDITIONS:

Column: 4.6 x 50 mm, HALO PFP  
Part Number: 92814-409  
Mobile Phase: 30/70--A/B  
A= 0.02 M Phosphate buffer, pH=3.0  
B= Methanol  
Flow Rate: 1.5 mL/min.  
Pressure: 200 Bar  
Temperature: 30 °C  
Detection: UV 254 nm, VWD  
Injection Volume: 1.0 µL  
Sample Solvent: Acetonitrile  
Response Time: 0.02 sec.  
Flow Cell: 2.5 µL semi-micro  
LC System: Shimadzu Prominence UFLC XR  
Extra column volume: ~14 µL

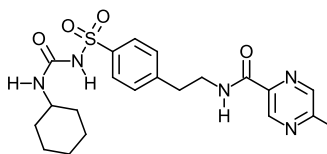
### STRUCTURES:



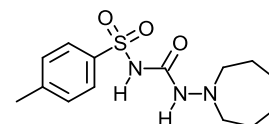
Chlorpropamide



Acetohexamide



Glipizide



Tolazamide

The sulfonyl urea drugs are used in the treatment of diabetes. They can be rapidly analyzed in less than 0.9 minutes using short, efficient HALO Fused Core PFP (perfluorophenylpropyl) columns.