



**INDUSTRIES**

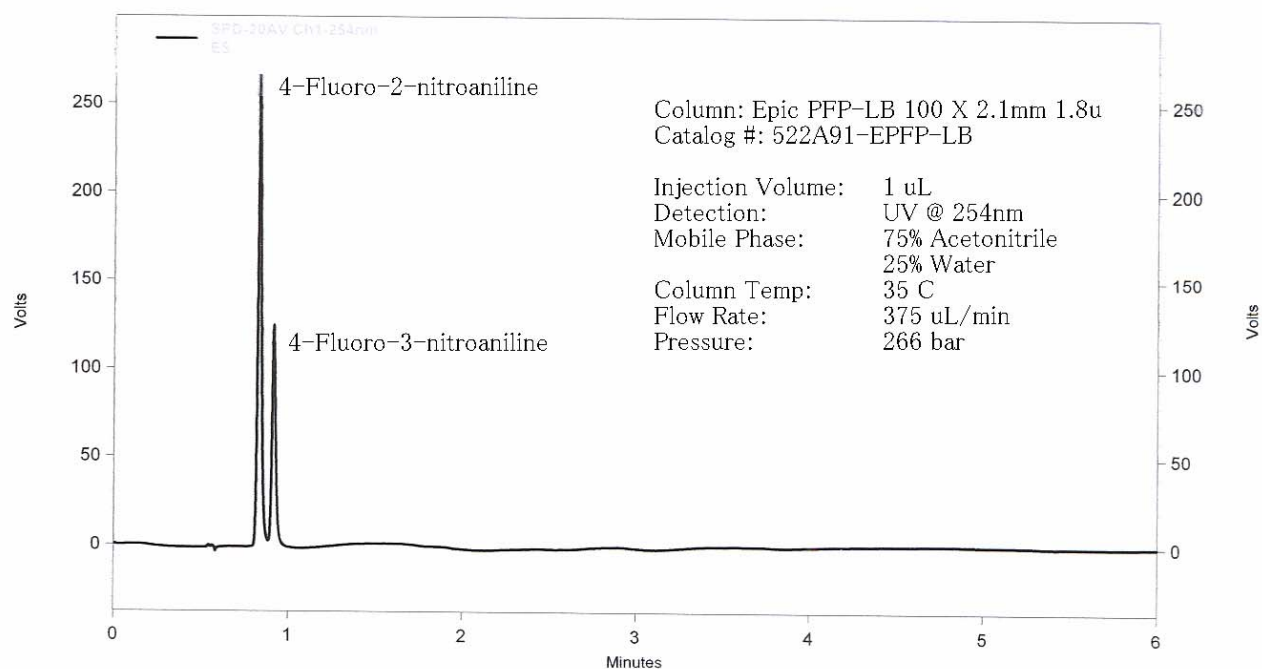
## Epic PFP-LB 1.8um HPLC Columns

---

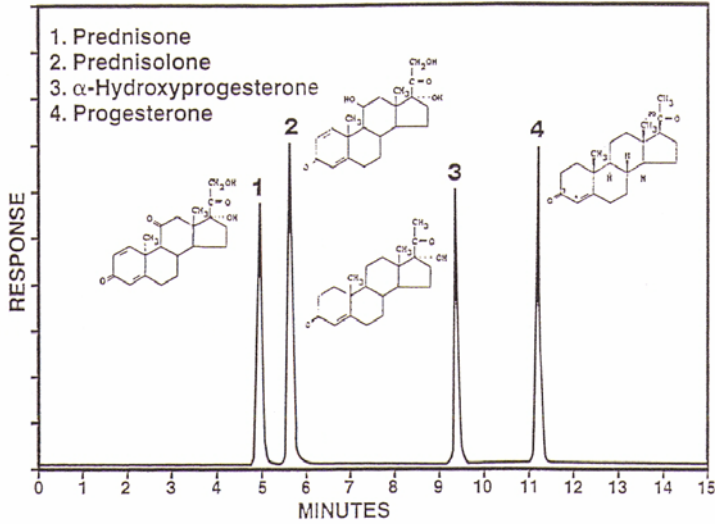
# Application News

701 South Route 73 • West Berlin, New Jersey 08091-2621 • (856) 753-8400 • Fax (856) 753-8484

ES Industries research and development efforts have yielded a new HPLC column and we are pleased to introduce Epic PFP-LB 1.8um. This development has elevated the Pentafluorophenyl (PFP) HPLC stationary phase to the next level of separation performance. Epic PFP-LB 1.8um combines the unique separation performance of PFP with the high performance characteristics of sub-2 micron ultra high purity silica and the stability of ES Industries specially developed low bleed (LB) technology. Epic PFP-LB is a truly unique stationary phase with properties significantly different than ODS phases. This unique characteristic results from bonded Pentafluorophenyl groups imparting a pi-pi electron interaction which produces an enhanced retention for many compounds particularly those that contain polarizable electrons. Many classes of compounds contain polarizable electrons including halogenated compounds, aromatics and conjugated systems. Several examples displaying the unique separation capabilities of Epic PFP-LB 1.8 um are shown below.

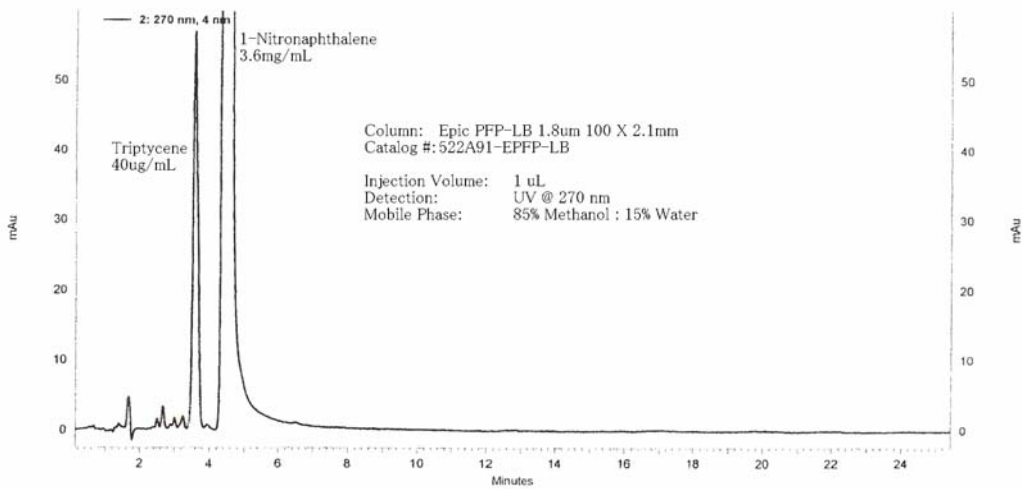
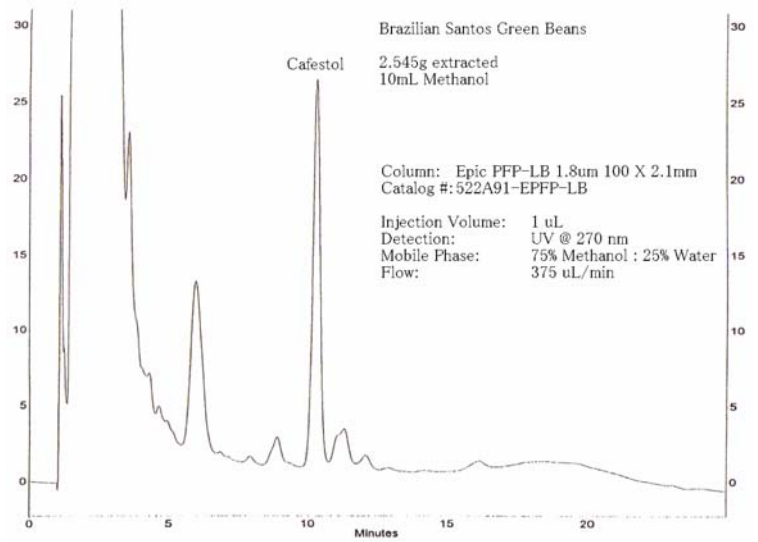


Steroids



Column: Epic PFP-LB 1.8 $\mu$ m 100 X 2.1mm  
 Catalog #: 522A91-EPPF-LB

Injection Volume: 1  $\mu$ L  
 Detection: UV @ 254 nm  
 Mobile Phase: Acetonitrile:Water  
 Gradient 40-80% Acetonitrile, 0-6 min. 2 min hold  
 Flow: 375  $\mu$ L/min  
 Pressure: 406 bar



ES INDUSTRIES  
 701 South Route 73  
 West Berlin NJ 08091

Toll-Free: 1-800-356-6140  
 Telephone: 856-753-8400  
 Fax: 856-753-8484

email: [esindustries@msn.com](mailto:esindustries@msn.com) website: [www.esind.com](http://www.esind.com)