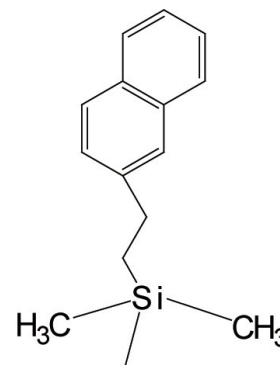


Tocopherols - COSMOSIL π NAP

COSMOSIL π NAP provides greater performance in separating positional isomers and other closely related compounds which are difficult to analyze with C_{18} .

Packing Material	π NAP	2.5 π NAP
Silica Gel	High Purity Porous Spherical Silica	
Average Particle Size	5 μ m	2.5 μ m
Average Pore Size	approx. 120 Å	approx. 130 Å
Specific Surface Area	approx. 300 m ² /g	approx. 330 m ² /g
Stationary Phase	Naphtylethyl Group	
Bonding Type	Monomeric	
Main Interaction	Hydrophobic Interaction π - π Interaction	
End Capping Treatment	Near-perfect Treatment	

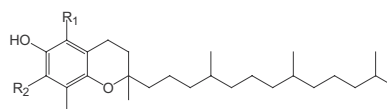
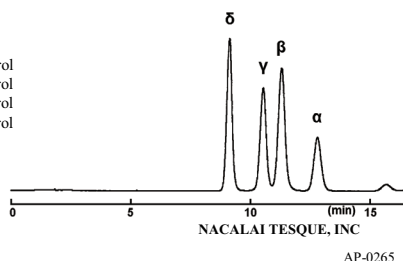


■ COSMOSIL π NAP

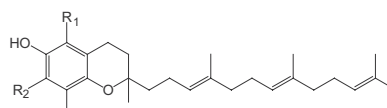
COSMOSIL Application Data

Column: π NAP
 Column size: 4.6mm I.D.-150mm
 Mobile phase: Methanol/ H₂O = 90/10
 Flow rate: 1.0 ml/min
 Temperature: 30°C
 Detection: UV295nm

Sample: α -Tocopherol
 β -Tocopherol
 γ -Tocopherol
 δ -Tocopherol



Tocopherol	R ₁	R ₂
α -Tocopherol	CH ₃	CH ₃
β -Tocopherol	CH ₃	H
γ -Tocopherol	H	CH ₃
δ -Tocopherol	H	H

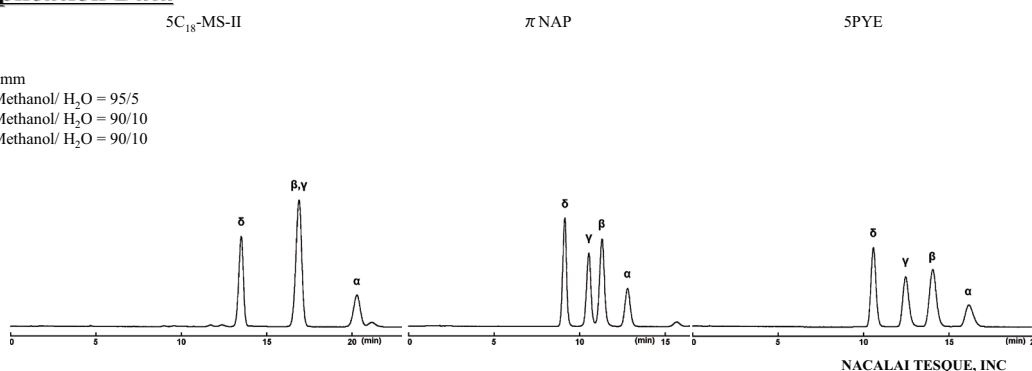


Tocotrienol	R ₁	R ₂
α -Tocotrienol	CH ₃	CH ₃
β -Tocotrienol	CH ₃	H
γ -Tocotrienol	H	CH ₃
δ -Tocotrienol	H	H

COSMOSIL Application Data

Column: π NAP
 Column size: 4.6mm I.D.-150mm
 Mobile phase: π NAP Methanol/ H₂O = 90/10
 5PYE Methanol/ H₂O = 90/10
 Flow rate: 1.0 ml/min
 Temperature: 30°C
 Detection: UV295nm

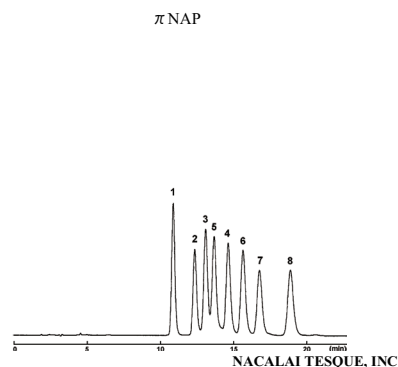
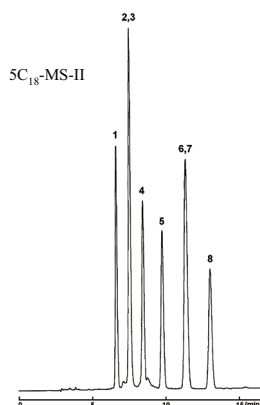
Sample: α -Tocopherol
 β -Tocopherol
 γ -Tocopherol
 δ -Tocopherol



COSMOSIL Application Data

Column:
 Column size: 4.6mmI.D.-250mm
 Mobile phase: 5C₁₈-MS-II Methanol
 π NAP Methanol/ H₂O = 90/10
 Flow rate: 1.0 ml/min
 Temperature: 30°C
 Detection: UV295nm

Sample: 1; δ-Tocotrienol
 2; γ-Tocotrienol
 3; β-Tocotrienol
 4; α-Tocotrienol
 5; δ-Tocopherol
 6; γ-Tocopherol
 7; β-Tocopherol
 8; α-Tocopherol



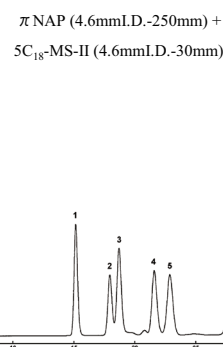
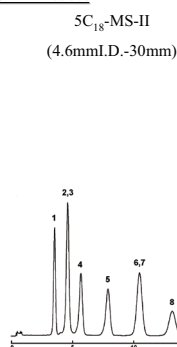
NACALAI TESQUE, INC

AP-1071

COSMOSIL Application Data

Column:
 Column size: (4.6mmI.D.-30mm)
 Mobile phase: Methanol/ H₂O = 90/10
 Flow rate: 1.0 ml/min
 Temperature: 30°C
 Detection: UV295nm

Sample: 1; δ-Tocotrienol
 2; γ-Tocotrienol
 3; β-Tocotrienol
 4; α-Tocotrienol
 5; δ-Tocopherol
 6; γ-Tocopherol
 7; β-Tocopherol
 8; α-Tocopherol



NACALAI TESQUE, INC

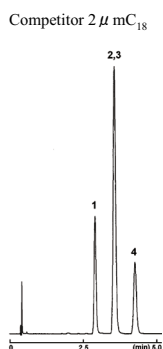
AP-1156

■ COSMOSIL 2.5πNAP

COSMOSIL Application Data

Column:
 Column size: 3.0mmI.D.-75mm
 Mobile phase: Competitor 2 μ mC₁₈ Methanol / H₂O = 95/5
 2.5 π NAP Methanol / H₂O = 85/15
 Flow rate: 1.0 ml/min
 Temperature: 40°C
 Detection: UV295nm

Sample: 1; δ-Tocopherol
 2; γ-Tocopherol
 3; β-Tocopherol
 4; α-Tocopherol



NACALAI TESQUE, INC

AP-1151

For research use only, not intended for diagnostic or drug use.

nacalai tesque
 The quality for certainty.



NACALAI TESQUE, INC.
 Nijo Karasuma, Nakagyo-ku, Kyoto 604-0855 JAPAN
 TEL : +81-(0)75-251-1730
 FAX : +81-(0)75-251-1763
 Website : www.nacalai.com
 E-mail : info.intl@nacalai.com