



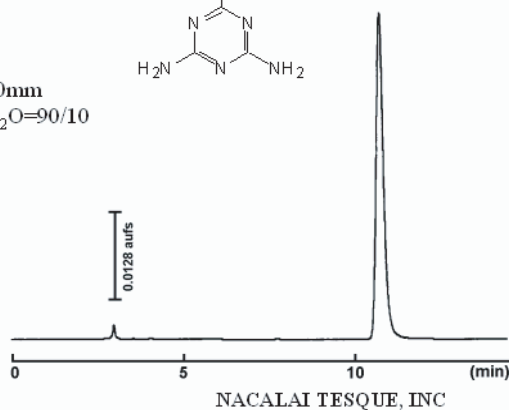
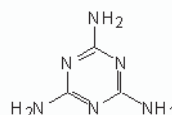
Melamine analysis by COSMOSIL HILIC

Melamine analysis by HPLC and LC/MS/MS using COSMOSIL HILIC.

HPLC

COSMOSIL Chromatogram Index

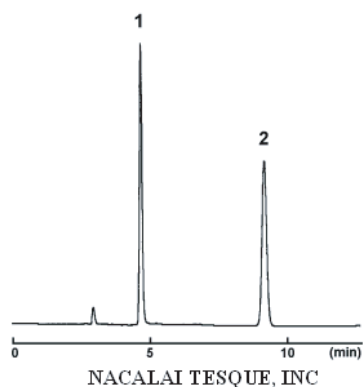
Sample: Melamine
CAS No.: [108-78-1]
Molecular formula: C₃H₆N₆
Column: HILIC
Column size: 4.6mm I.D.-250mm
Mobile phase: Acetonitrile/ H₂O=90/10
Flow rate: 1.0 ml/min
Temperature: 30°C
Detection: UV240 nm
Attenuation: 0.128 au/fs
Sample conc.: 1.0mg/ml
Injection volume: 1.0µl
Retention time: 10.79min
Capacity factor: 2.79

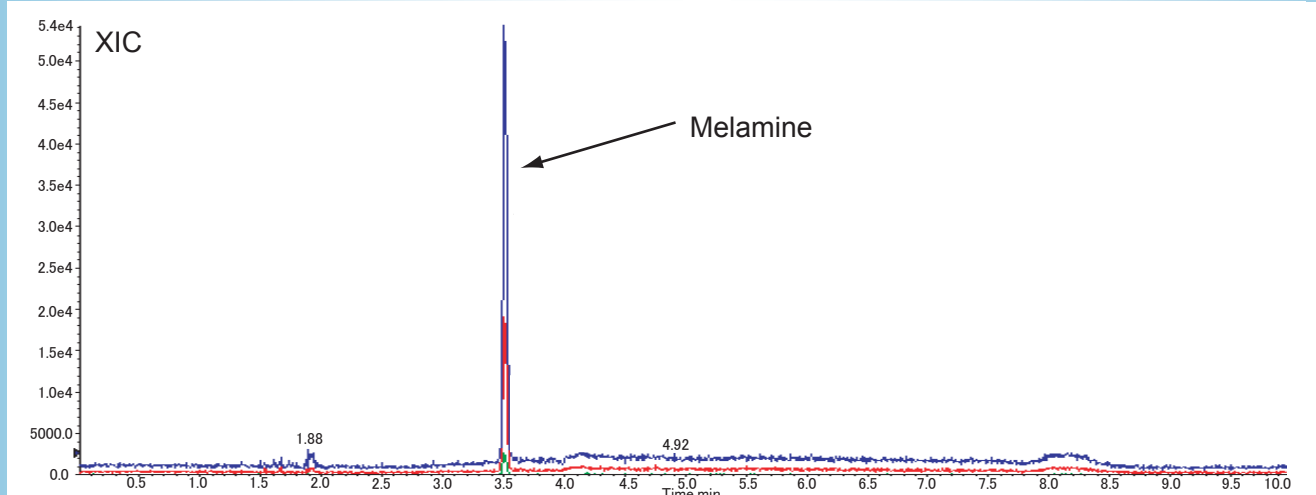
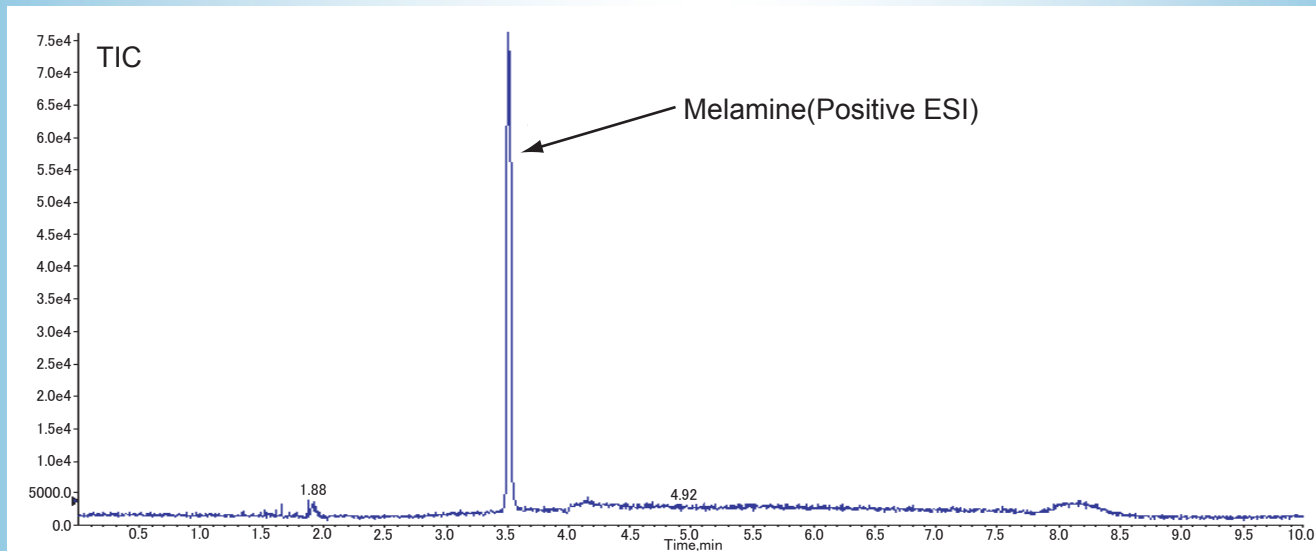


COSMOSIL Application Data

Column: HILIC
Column size: 4.6mm I.D.-250mm
Mobile phase: Acetonitrile/ 10mmol/l
 Ammonium Acetate = 70/30
Flow rate: 1.0 ml/min
Temperature: 30°C
Detection: UV225nm

Sample: 1; Melamine (0.1 µg)
 2; Cyanuric Acid (1.0 µg)





Column: COSMOSIL HILIC 2.0 mm I.D. x 150 mm
 Mobile Phase: A: acetonitrile +10mmol/l ammonium acetate
 B: water + 10mmol/l ammonium acetate

Temperature: 40°C
 Detection: MRM (ESI-POS)

Gradient:

time (min)	flow rate (μl/min)	%A	%B
int	250	97	3
5	250	20	80
5.5	250	3	97
5.6	250	97	3
10	250	97	3

Q1	Q3
127	85
127	68
127	60

Sample Volume: Melamine (10ppb /10 μl / inj)

LC/MS/MS data is provided by customer.

For more information of COSMOSIL HILIC, please visit our website.

For research use only, not intended for diagnostic or drug use.

NACALAI TESQUE, INC.

Nijo Karasuma, Nakagyo-ku, Kyoto 604-0855, JAPAN

TEL: +81-75-251-1730

FAX: +81-75-251-1763

Web site: <http://www.nacalai.com>

E-mail: info.intl@nacalai.co.jp