

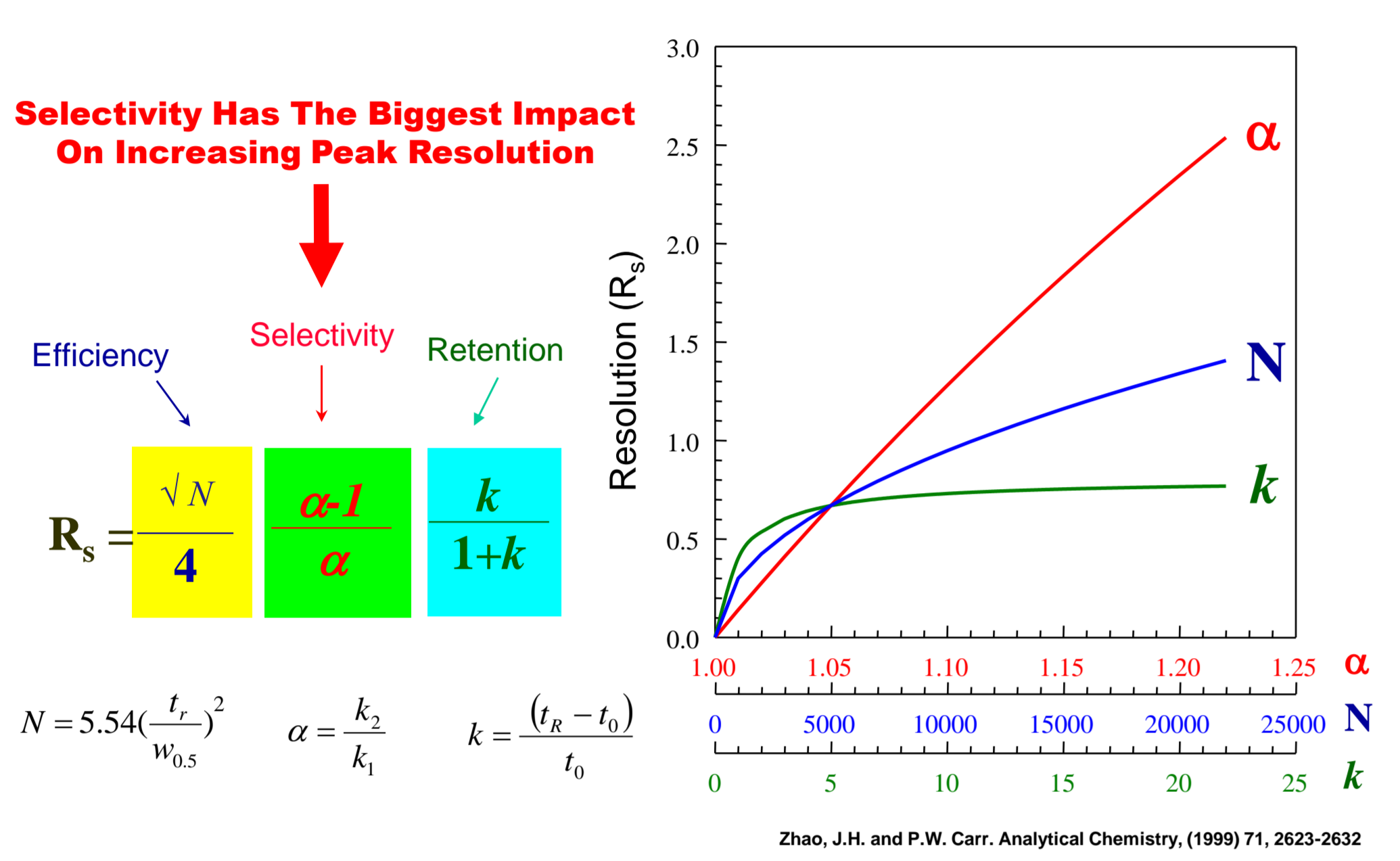
Alan P McKeown¹, Geoffrey Faden²

¹Advanced Chromatography Technologies Ltd, 1 Berry Street, Aberdeen, Scotland, AB25 1HF UK ²MACMOD Analytical Inc., 103 Commons Court, PO Box 587, Chadds Ford, PA 19317 USA

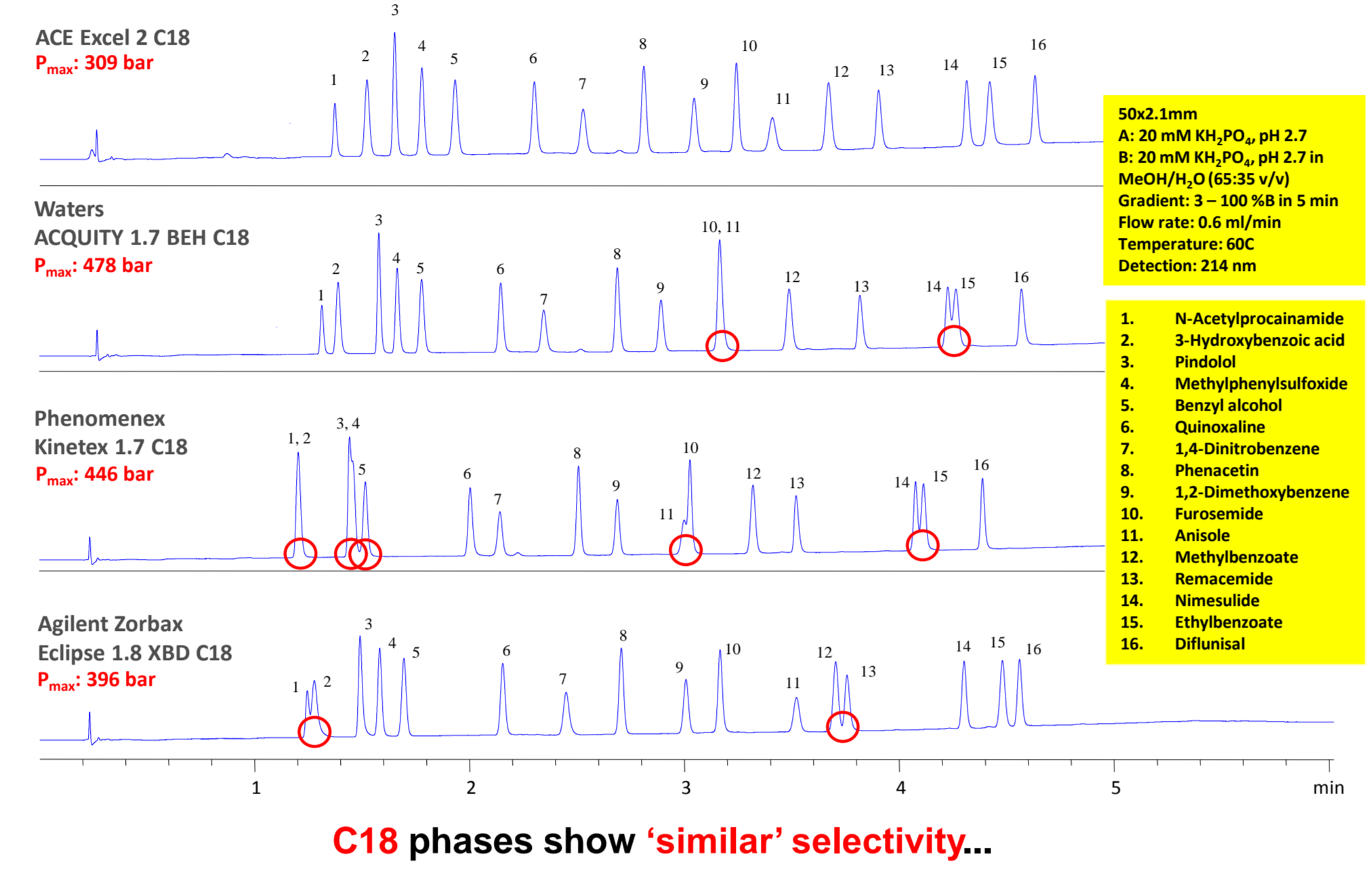
THE CHALLENGE

Engineer a new, unique CN UHPLC / HPLC phase with polar and non-polar retention and alternative selectivity that is reproducible, robust and gives efficient chromatography

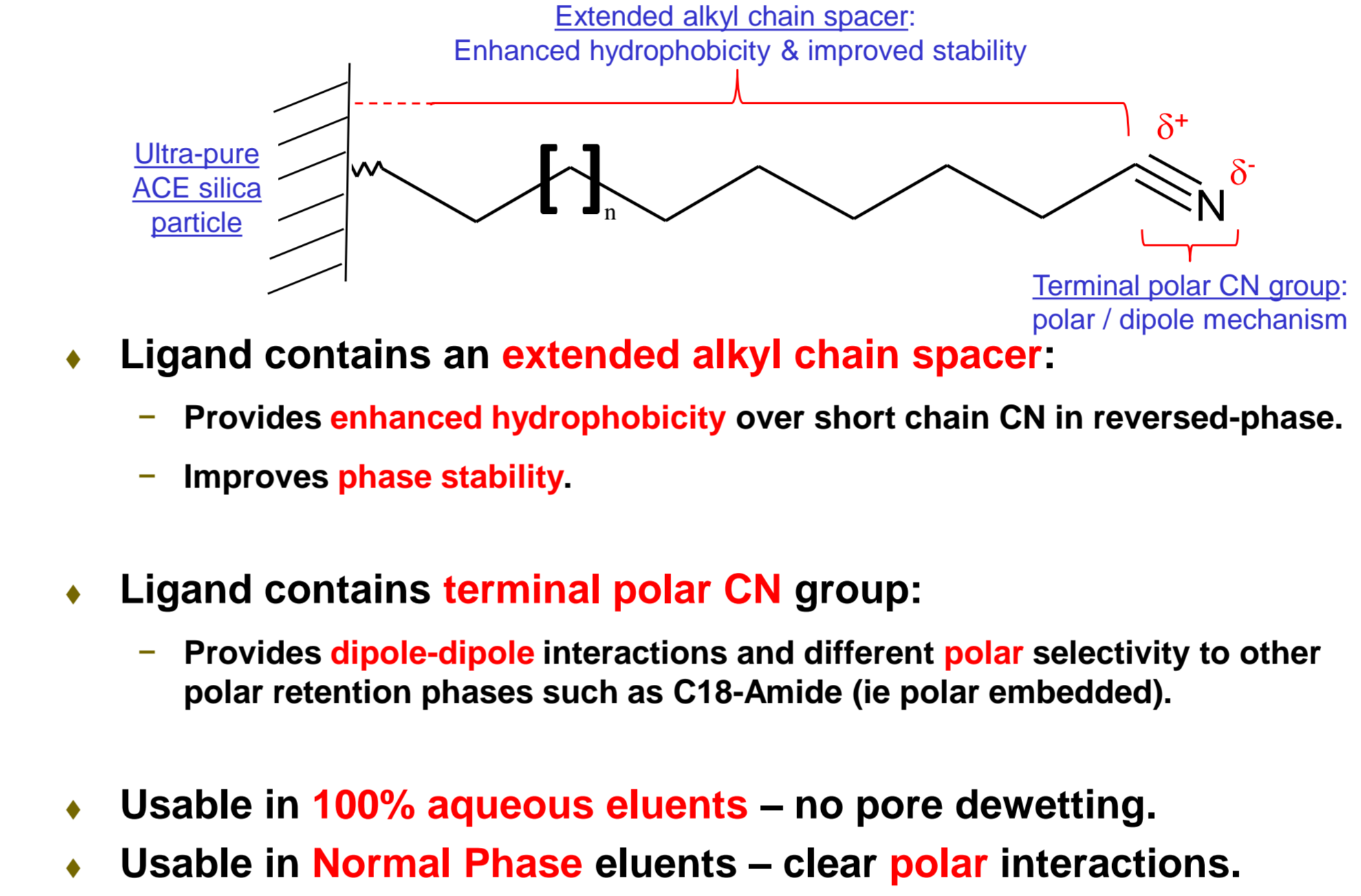
1. RESOLUTION, SELECTIVITY, EFFICIENCY & RETENTION



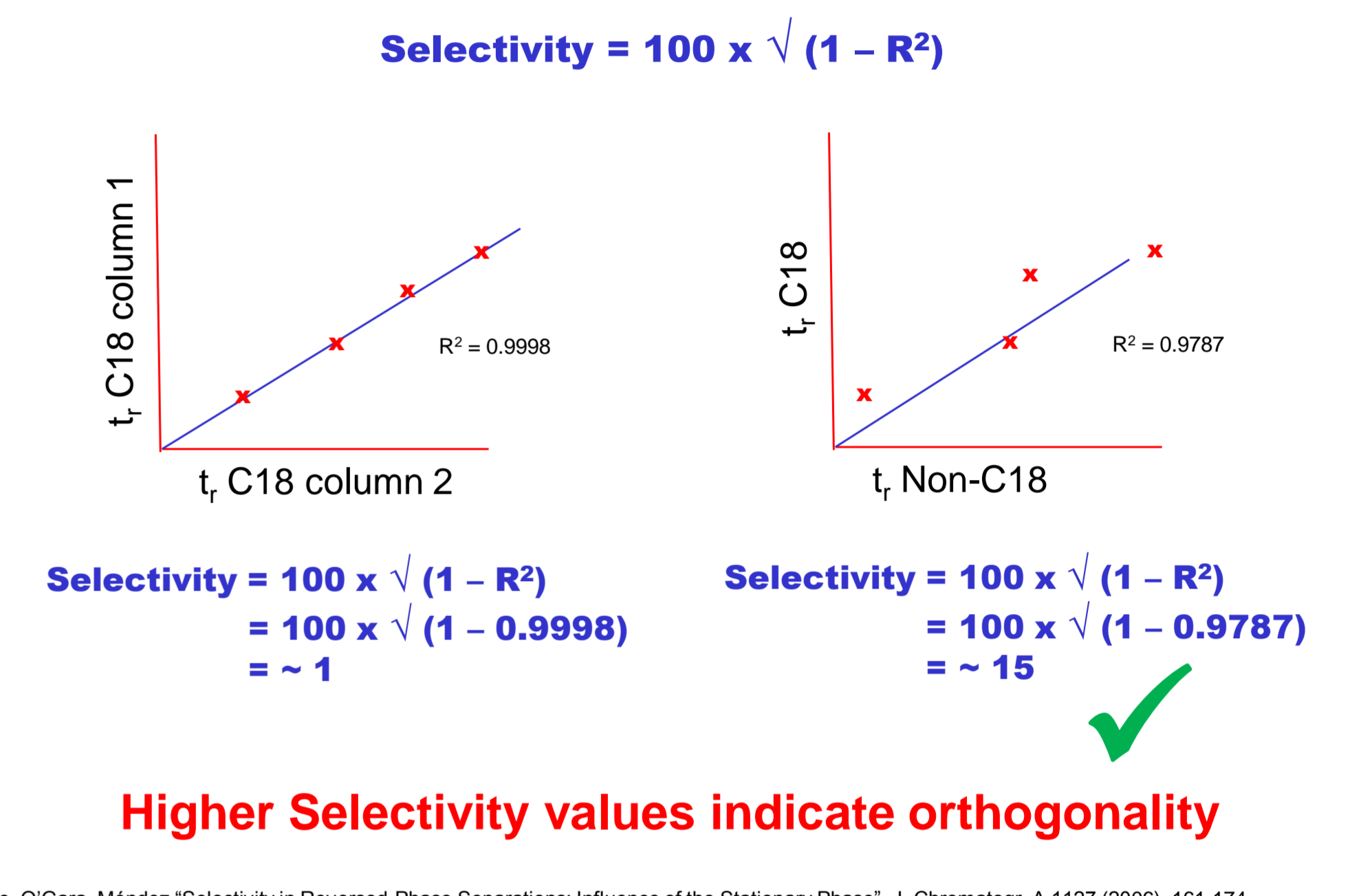
2. C18 STATIONARY PHASES SHOW SIMILAR SELECTIVITY



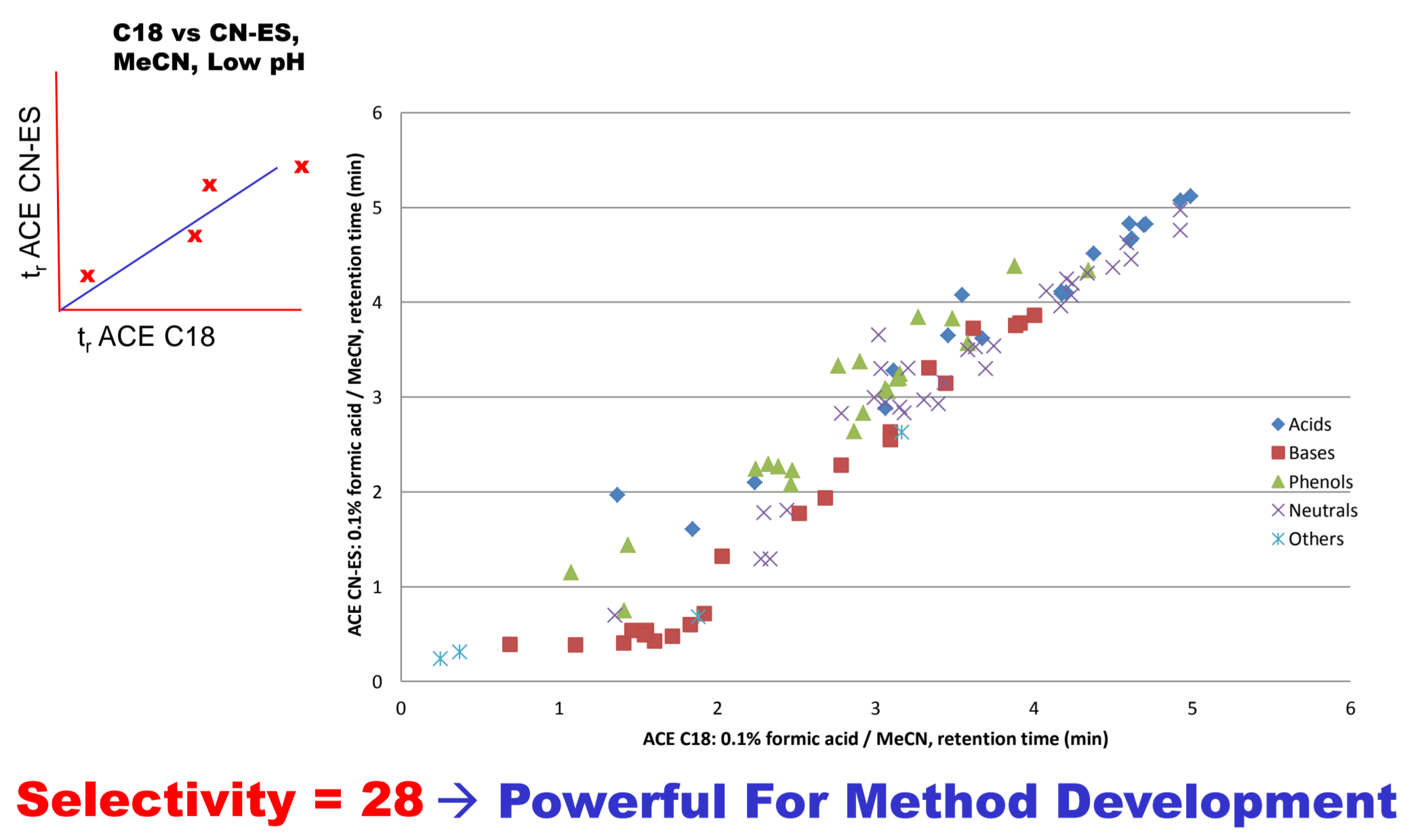
3. ACE[®] CN-ES: A NEW STATIONARY PHASE OPTION



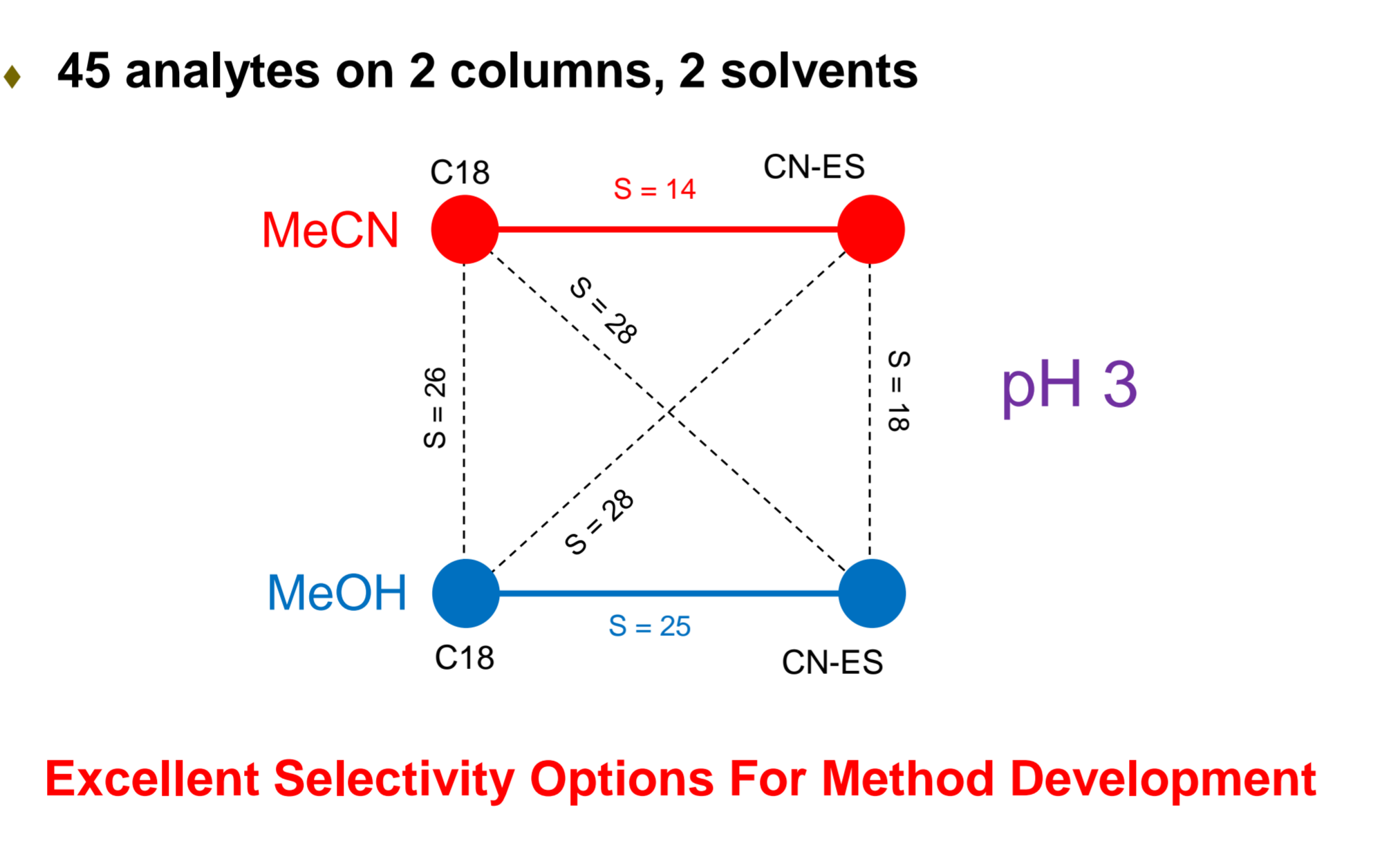
4. DETERMINING SELECTIVITY VALUES* FOR PHASES



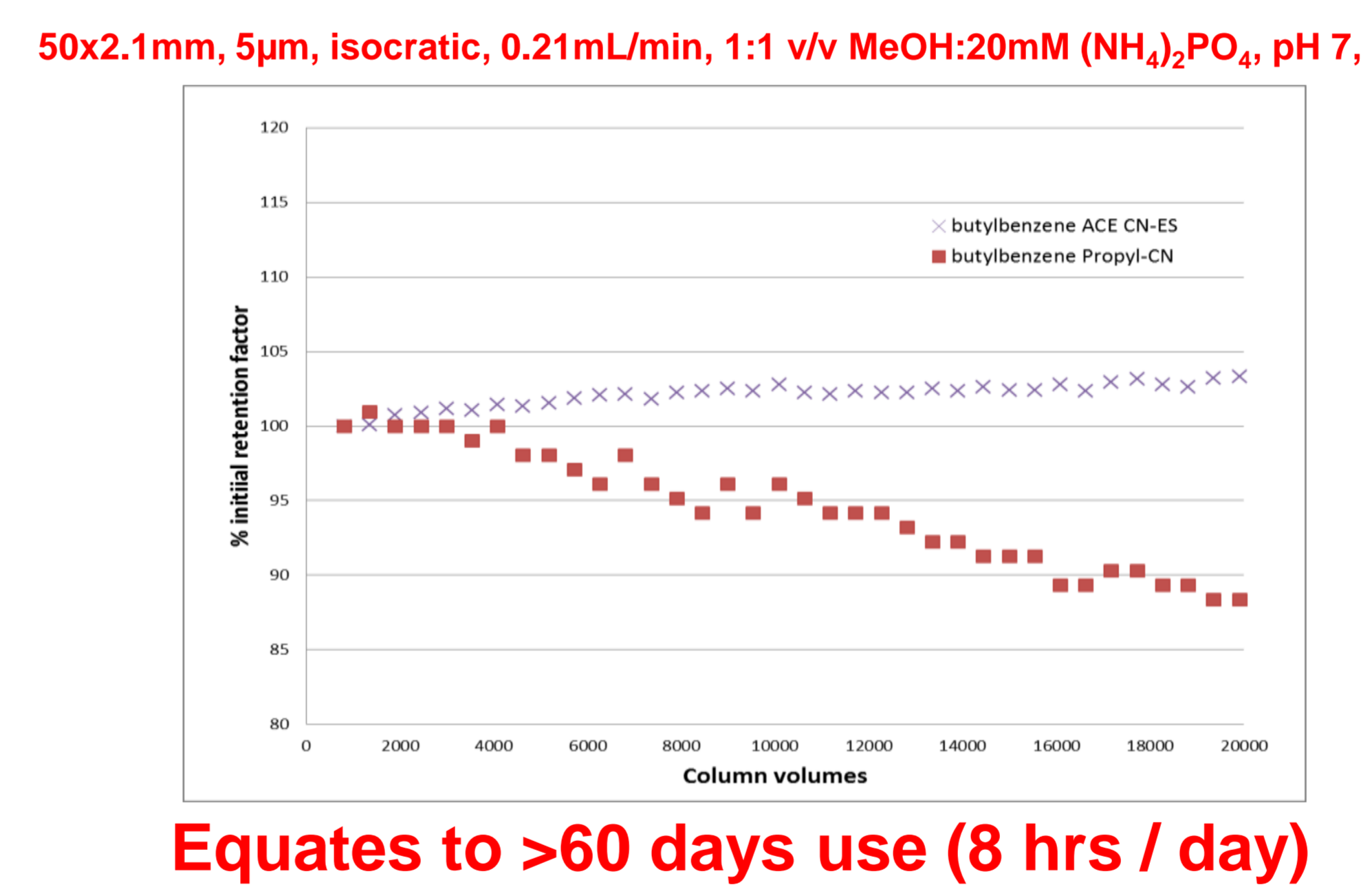
5. ACE[®] CN-ES EXCELLENT POLAR / NON-POLAR SELECTIVITY



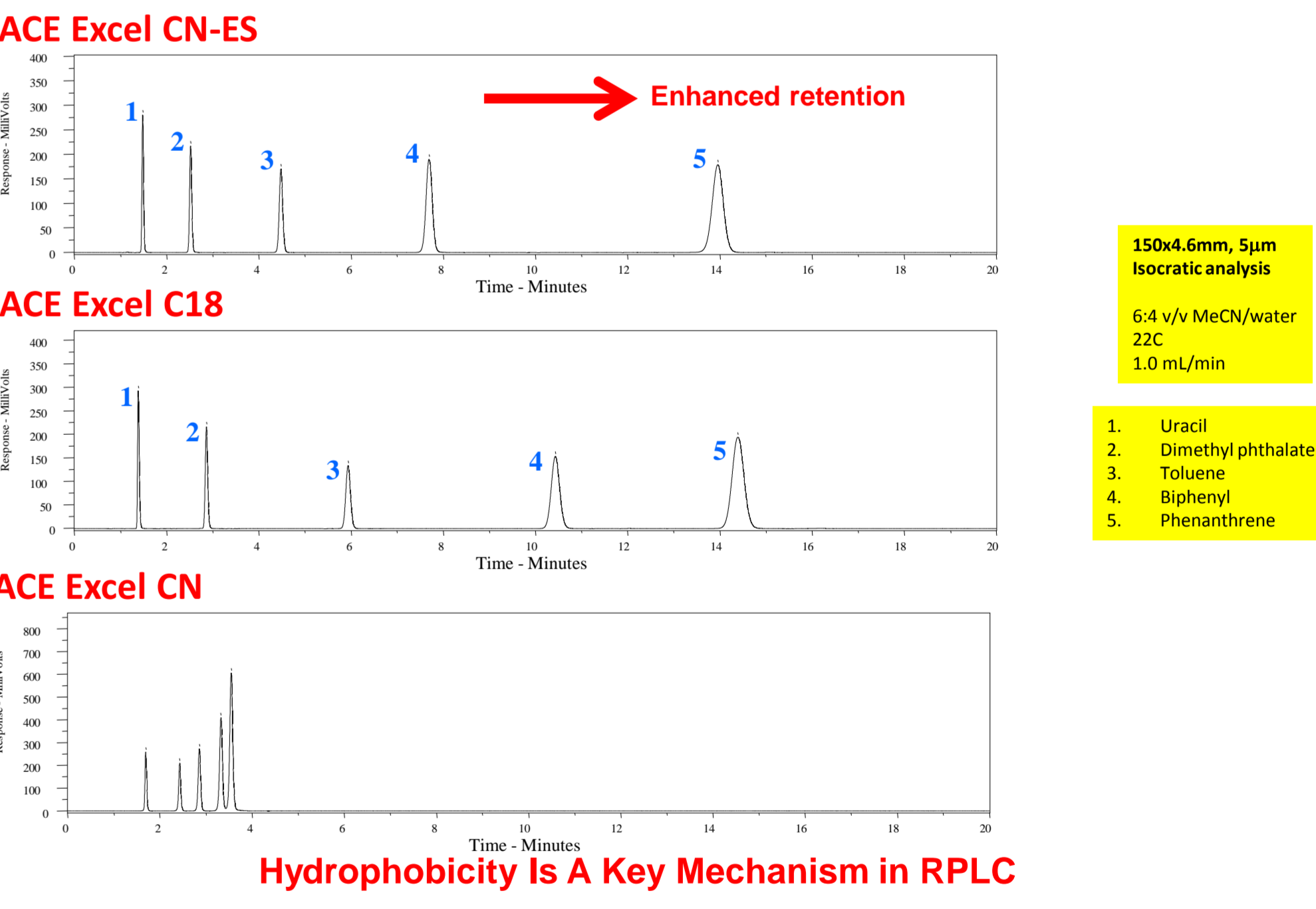
6. SELECTIVITY VALUES FOR METHOD DEVELOPMENT



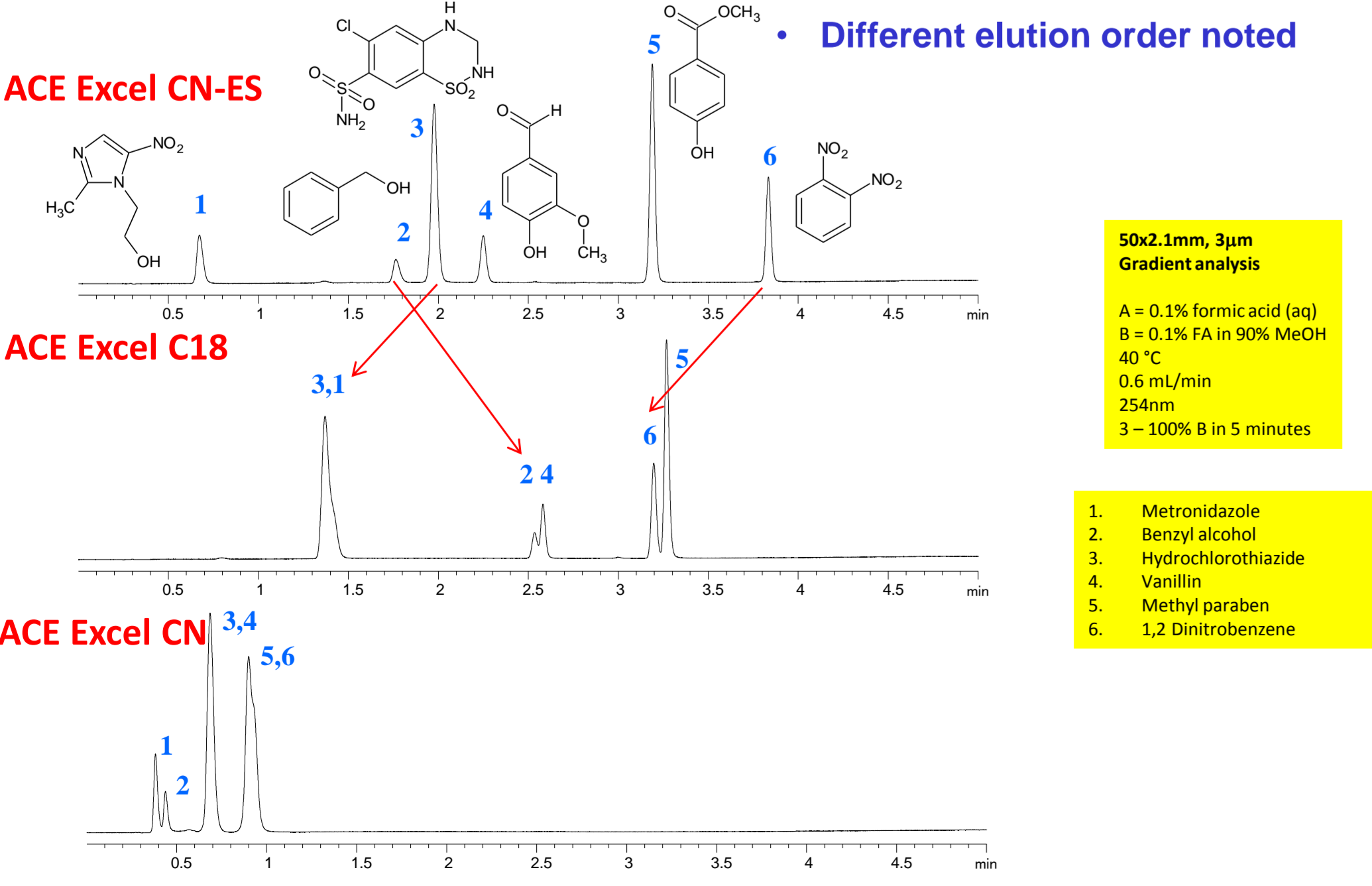
7. ACE[®] CN-ES SHOWS ENHANCED STABILITY: pH 7, 60C



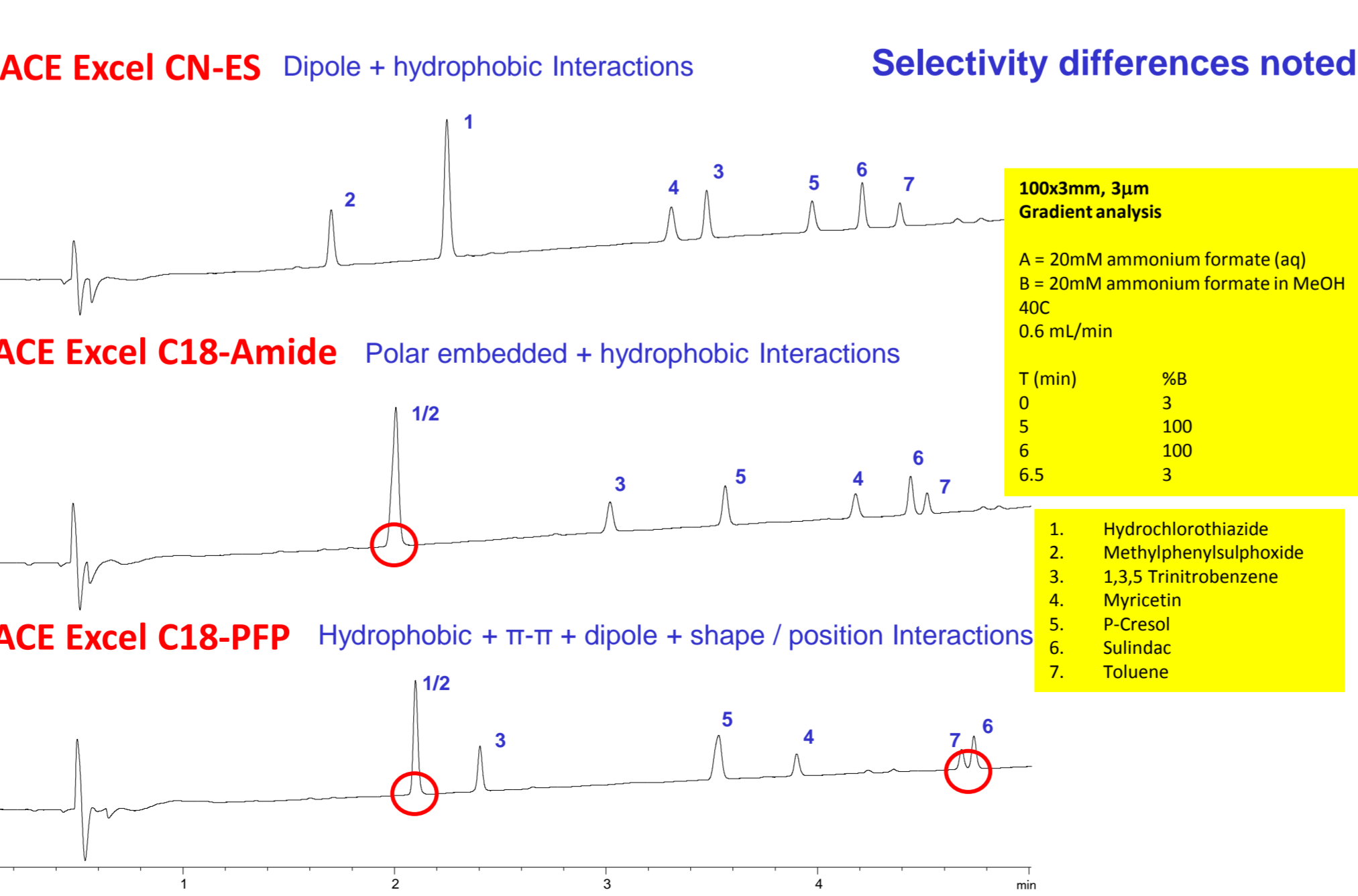
8. ACE[®] CN-ES SHOWS ENHANCED HYDROPHOBIC RETENTION



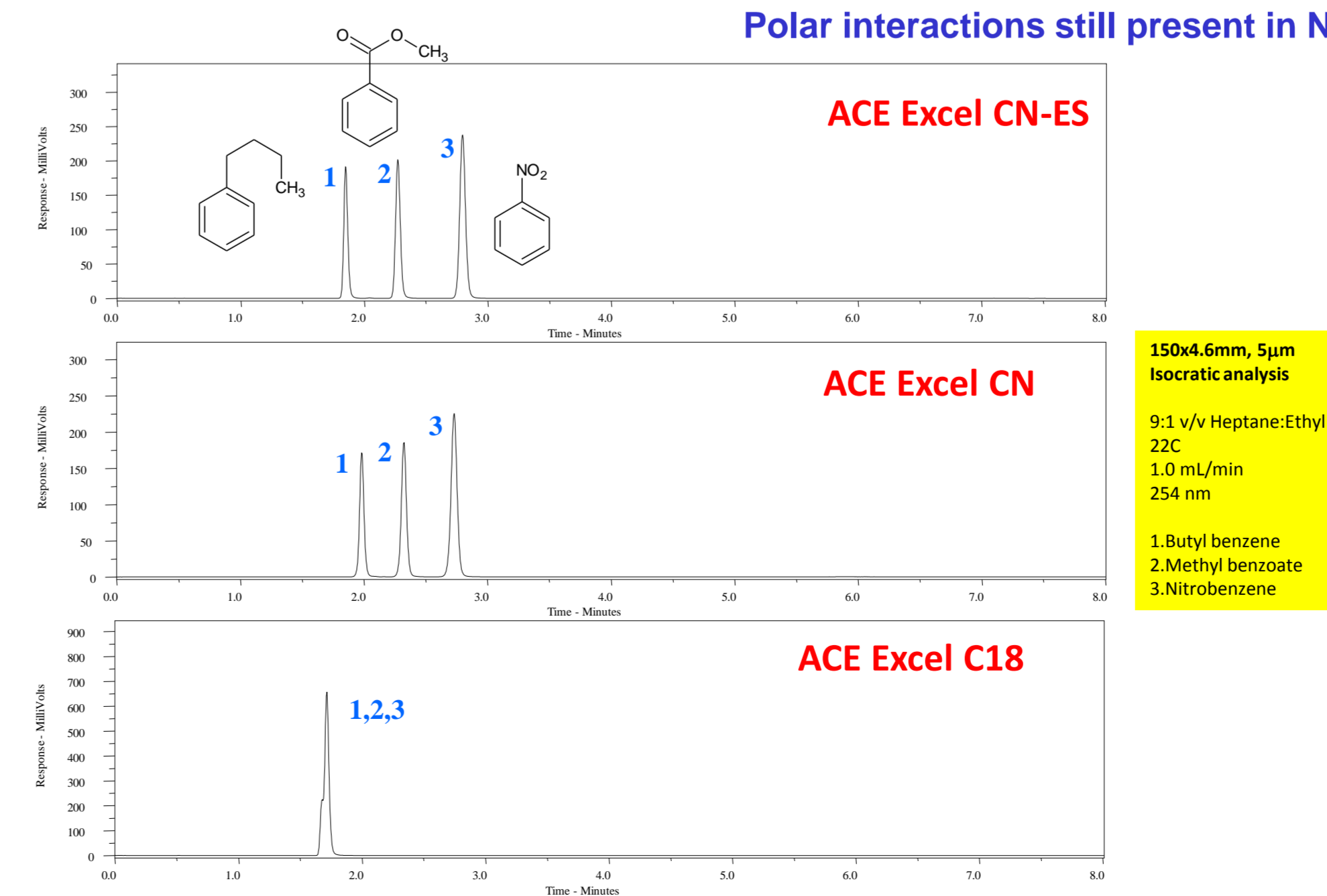
9. METHOD DEVELOPMENT: ALTERNATE SELECTIVITY



10. ALTERNATIVE SELECTIVITY TO OTHER ACE[®] PHASES



11. ACE[®] CN-ES: POLAR INTERACTIONS IN NPLC



12. SUMMARY AND CONCLUSIONS

- The ACE[®] CN-ES provides **alternative selectivity** to C18 based phases which is ideal for **method development** or **sample screening**.
- The **unique ligand design** of the ACE[®] CN-ES improves the **hydrophobic retention mechanism** contribution to separations whilst providing **enhanced stationary phase stability**.
- The ACE[®] CN-ES is useful for separation of **polar and non-polar** analytes where **traditional CN** phases do not provide sufficient retention of column lifetime.
- The **versatile ACE[®] CN-ES** provides **multiple modes of interaction** in RPLC or NPLC to assist in separation of analyte mixtures.