

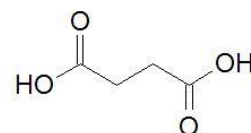
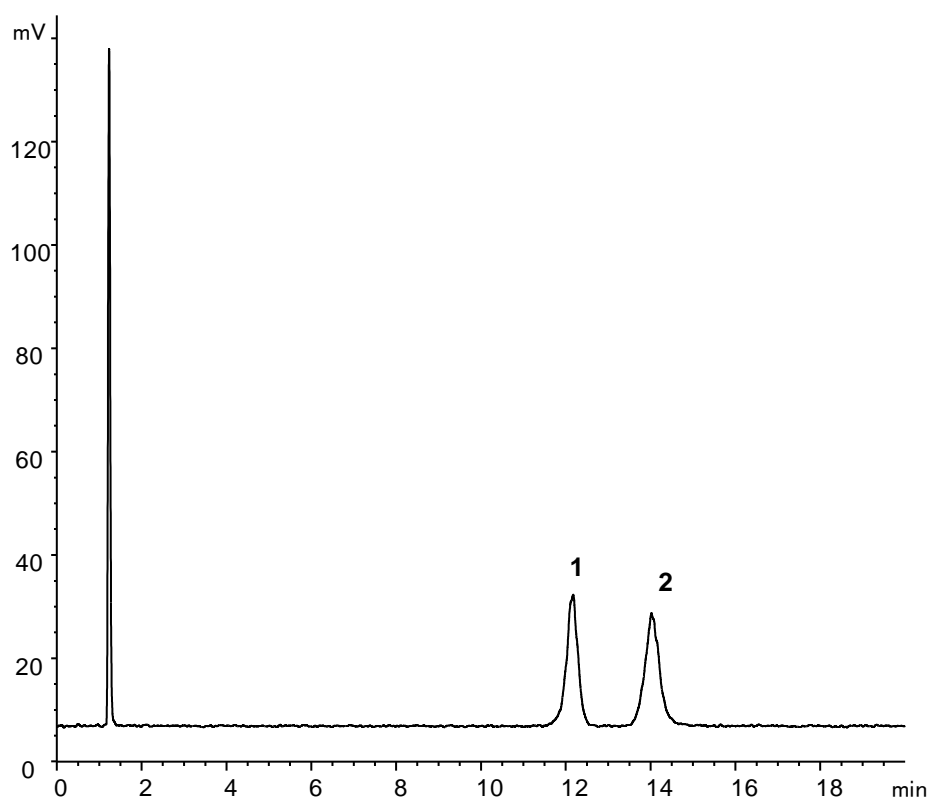
# Methylmalonic Acid and Succinic Acid using HILIC Mode

**ACE**<sup>®</sup>  
Ultra-inert  
UHPLC & HPLC Columns

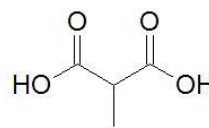
Application #AN4520

## Conditions

Column: ACE 5 HILIC-B  
Dimensions: 150 x 4.6 mm  
Part Number: HILB-5-1546U  
Mobile Phase: 10 mM ammonium formate pH 3.0 in MeCN/H<sub>2</sub>O (90:10 v/v)  
Flow Rate: 1.5 mL/min  
Injection: 5 µL  
Temperature: 25 °C  
Detection: ELSD  
Evaporator temperature: 30 °C  
Nebuliser temperature: 30 °C  
Gas speed: 1 SLM



1. Succinic acid



2. Methylmalonic acid